

an EnerSys company

METHOD OF PROCEDURE

RBMS Plus Firmware Upgrade to enable webpages without JAVA plugins

Summary

This procedure outlines how to help you update the firmware on the RBMS Plus. Firmware update removes Java plugins from the software and is designed for Chrome and Edge web browsers only. The new interface is easy to use and provides a wealth of information about battery status without a single click.

Equipment or Tools Necessary

- Latest firmware files
- Computer with TFTP Client Software
- RJ45 cable if updating locally

Procedure Overview

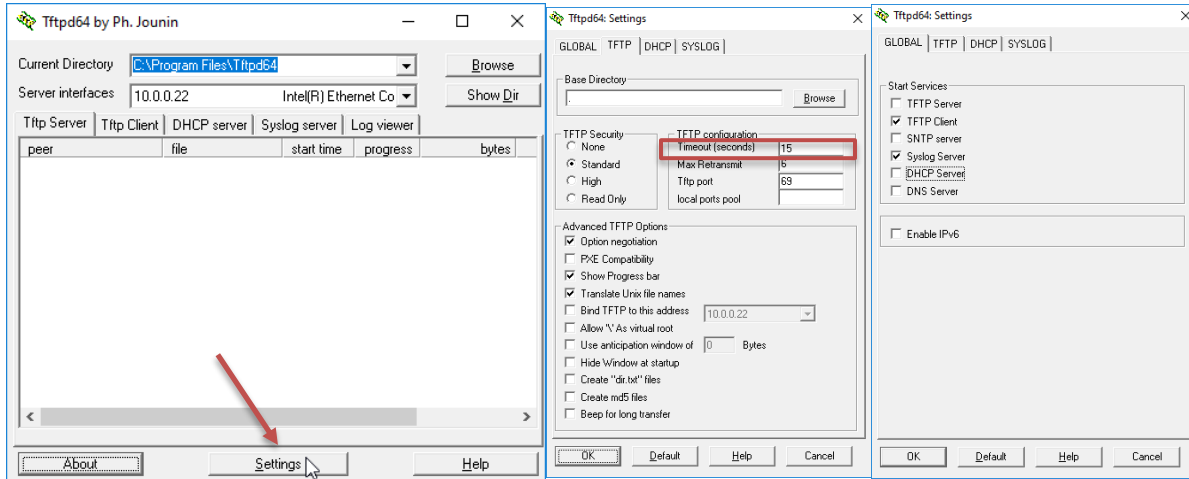
1. Download RBMS Plus Firmware
2. Download TFTP Client Software
3. Configure TFTP Client Software
4. Upload ROM and Web files
5. Reset controller

Procedure

1. Download RBMS Plus Firmware
 - Go to the Alpha.ca website support page at <https://www.alpha.ca/support/support-main-menu/software-firmware-downloads>, Outdoor UPS section, and down to the bottom you will find Remote Battery Monitoring System Plus firmware and web files.
2. Download TFTP Client Software
 - You will need TFTP client software. If you don't already have, go to http://philippe.jounin.pagesperso-orange.fr/tftpd32_download.html and download the Standard Edition of either 32 or 64 bit based on your operating system and install.
3. Configure TFTP Client Software
 - Be sure to close any open browser sessions with the RBMS and be connected to the RBMS with Ethernet.
 - Open the TFTP software and click **Settings** and then change the **Timeout** to 15. Click **Global** tab and only have **TFTP Client** and **Syslog Server** checked. Click **OK**. Don't close and restart when prompted to.



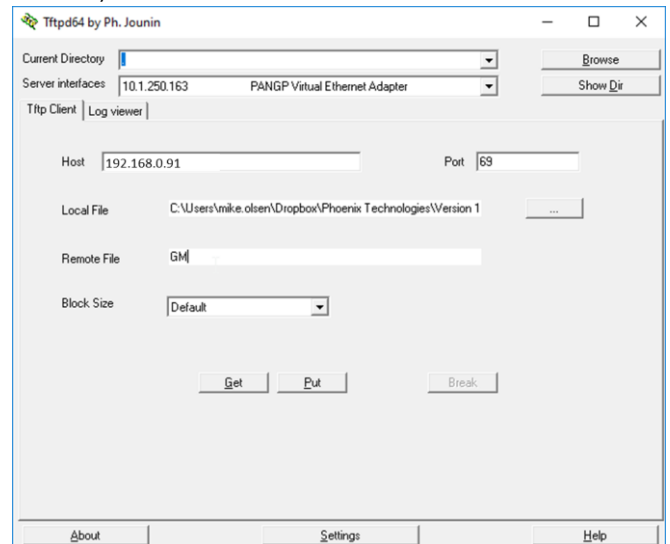
an EnerSys company



4. Upload ROM and Web files

- There are four files to upload. The ROM file must be uploaded first and then followed by the three WEB files, in order. **Wait 30 seconds after the ROM is uploaded before uploading the web pages.**
 - Ignore Current Directory and Server interfaces
 - Connect to RMBS Plus locally via RJ45 cable or remotely
 - Host – Enter IP address of RBMS, factory default IP is 192.168.0.91
 - Port – Enter 69
 - Local File – Browse and select the files in order
 - Remote File – Use name from table below, **must be in Upper Case**
 - **Wait 30 seconds after first file**
 - Click Put for each file

Description	Local File name	Remote File
Firmware	SCmini-Plus_161.rom	GM
Web file	SCmini-Plus_web1_103.cob	WEB1
Web file	SCmini-Plus_web2_103.cob	WEB2
Web file	SCmini-Plus_web3_103.cob	WEB3





an EnerSys company

5. Reset Controller

- The controller should be reset after the updates are complete. This can be done by:
 - Cycling power
- OR**
- Web browse to RBMS, login (admin), click **Site Data**, Click **Reset Controller** button

Setting Admittance Alarm

- If you previously had each battery set with its own reference value be sure to verify this setting. This version of firmware is using one setting for all batteries.

Operation Notes

- Password is "admin" unless you had previously changed it
- Click each battery for more detail, flash sensor LED for easy location of battery, and change battery name. An example of battery names would be "model, original Siemens value, date installed, battery number" or "240XTV, 1400S, 11/18/19, Batt 1"
- Click anywhere in "Site Data" to bring up alarm settings. Use the dropdown to find other alarms
- Battery status bars will change from green to yellow or red if alarm conditions are present
- Pop-up windows can be moved by clicking the title and dragging
- Network – Allows you to change the IP address of the unit. Subnet, gateway, email, and NTP still need to be set by telnet due to memory limitations

End of Method of Procedures

For assistance, contact Alpha Technical Support:

Toll Free North America: 1-888-462-7487

International: +1-604-436-5547

Monday - Friday, 7:00 AM - 5:00 PM PST for regular inquires

24/7 for emergency support

[Click here to report a problem](#)