

How to Upgrade Micro 1000 Series Firmware Version 2.06.00 - Locally

Summary

This procedure outlines how to upgrade the software of a Micro UPS unit with firmware lower than V1.07 via a RS232 interface using the FXM Programmer application.

Before performing any upgrade or battery replacement, fill in the *FXM Site Log* sheet.

Latest firmware can be download at, <https://www.alpha.ca/support/support-main-menu/software-firmware-downloads> under the UPS Outdoor Power tab.

Tools/Reference Documents Required

- Computer with Windows7 or later with Microsoft .NET 4.0 libraries installed
- Ethernet cable
- USB to RS232 converter and an RS232 cable (if using FXM Programmer)

Important: When proceeding with this upgrade, the load will be lost when the unit is taken offline for upgrade, if a UATS (External Bypass) is present it can be enabled to sustain the load.

Procedure:

There are two stages: update FXM Firmware to V2.06.00, and then update the Ethernet card firmware to V2.01.00.

Configuring the UATS to Bypass and testing FXM:

1. Ensure the UPS SUPPLY BREAKER is turned on.
2. Change Red switch position to **BYPASS**.
3. Test the FXM by turning **OFF** FXM INPUT BREAKER and making sure it goes to **INVERTER** mode and that output voltage is present.
4. Turn **ON** FXM INPUT BREAKER and wait until it is in **LINE** mode.
5. If unit is functioning proceed to firmware upgrade.



Stage One - Update the Micro 1000 Firmware

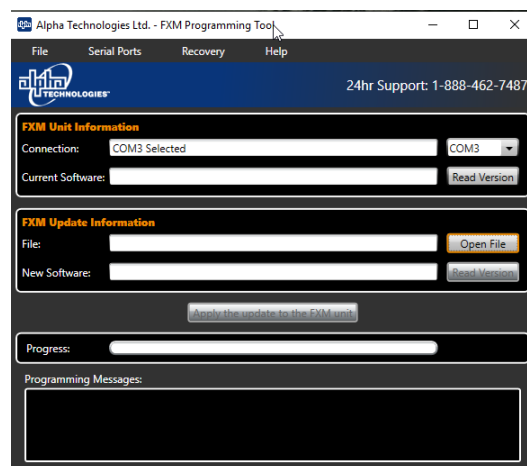
1. Go to the www.alpha.ca website.
2. Under the **Support** tab select **Software/Firmware Downloads**.
3. From the **Software/Firmware Downloads** page select the **UPS OUTDOOR POWER** tab.
4. Select the **FXM Programmer V1.00** file. Click **Download**.

5. Download the file to your download folder.
6. Open the file "**FXM_PROGRAMMER_V1.0.exe**"; when the installation window appears, click **Next**.
7. Check **I accept terms in the license agreement** and click **Next**.
8. Select your Destination Folder and click **Next**.
9. Click **Install**. Allow admin permission (if applicable). Click **Finish** when done.
10. Once installed, open the program.
11. In the connection line, to the right, there is a drop-down menu it will detect the COM port. If not, it can be found under Device Manager.
12. Confirm FXM firmware **VERSION** via LCD before proceeding. Press **SELECT** on LCD, scroll to **SYSTEM STATUS-VERSION**.

NOTE

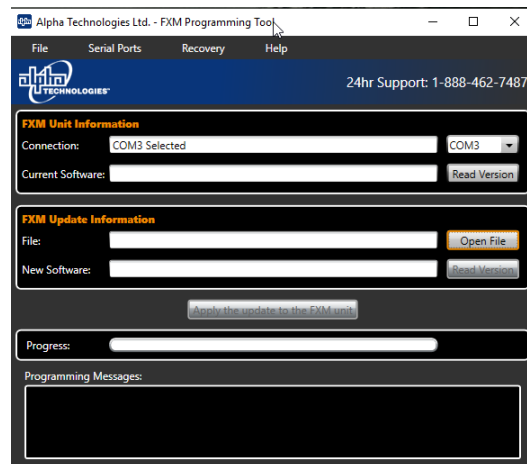
For Micro 1000 with firmware version lower than V1.07, upgrade to intermediate firmware version (step 16) before upgrading to 2.06.00(step 23) following step 13-26. If firmware version is greater than 1.08 follow step 21-26.

13. Turn off the **INPUT CIRCUIT BREAKER** and **BATTERY BREAKER** on the FXM. Push and hold the **SELECT** button while turning on **FXM INPUT CIRCUIT BREAKER**.
14. The LCD should display Alpha XP ISP.
15. In FXM Programmer, under FXM Update Information select **Open File**.



16. Browse to the firmware file
 - Micro 1000 UPS: 0350005-01_V1_08_70.sx
17. Select file and click Open.

18. Select Read Version button; it will display the FXM model and version from the software. Confirm that it is the model you are working on.
19. Select Apply the update to the FXM unit. Wait for progress to complete; the FXM will reboot into the main screen.
20. Confirm FXM firmware **VERSION** via LCD. Press **SELECT** on LCD, scroll to **SYSTEM STATUS-VERSION**.
 - Micro 1000 UPS: V1.08.70
21. Turn off the **INPUT CIRCUIT BREAKER** and **BATTERY BREAKER** on the FXM. Push and hold the **SELECT** button while turning on **FXM INPUT CIRCUIT BREAKER**.
22. The LCD should display Alpha XP ISP.
In FXM Programmer, under FXM Update Information select **Open File**.

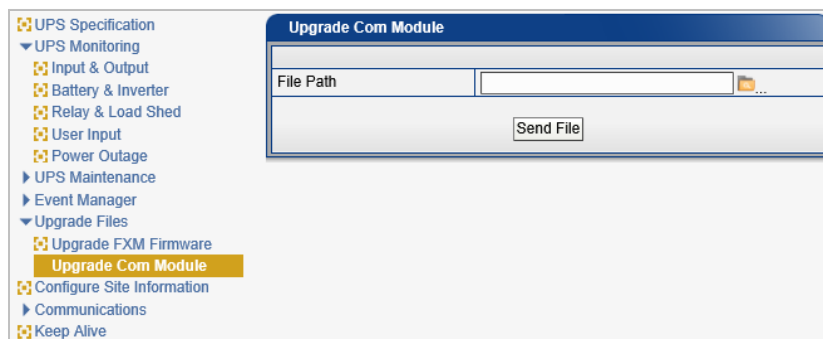


23. Browse to the firmware file.
 - Micro 1000 UPS: 035-090-01_J_MICRO1000_V2.06.00.FBIN
24. Select file and click **Open**.
25. Select **Read Version** button; it will display the FXM model and version from the software. Confirm that it is the model you are working on.
26. Select **Apply** the update to the FXM unit. Wait for progress to complete; the FXM will reboot into the main screen.

Stage Two - Update the Ethernet Card Firmware

1. Go to the www.alpha.ca website.
2. Under the **Support** tab select **Software/Firmware Download**.
3. From the **Software/Firmware Downloads** page select the **UPS OUTDOOR POWER** tab.

4. Select **Ethernet Card Firmware version V2.01.00**. Click **Download**.
5. To obtain the IP address, press **SCROLL** on front panel until the LCD displays **STATUS MENU**.
6. Select **STATUS MENU** and use **SCROLL** until presented with IP address.
7. Verify that your computer has the first three octets of its IP address the same as the FXM and the last different.
8. Connect an Ethernet cable from computer to Com Module.
9. Type the IP address into the search bar of any web browser.
Note: Default IP address: 192.168.0.90.
10. Go to **Upgrade Files > Upgrade Com Module**.
11. Browse to the upgrade file: 035-092-01 REVK_RMU_V2.01.00.ELF.EZIP.



12. Click **Send File** and you will be prompted to log on.
Note: Default password: 1111.
13. Once the software is uploaded, while the Ethernet card resets.

14. When complete, **select UPS Specification** to verify FXM Firmware SW version is 2.06.00 & Com Module SW version is 2.01.00.



The screenshot shows a software interface with a left-hand navigation menu and a main data table. The navigation menu includes categories like 'UPS Specification', 'UPS Monitoring', 'UPS Maintenance', 'Event Manager', and 'Upgrade Files'. The 'UPS Specification' section is expanded, showing various sub-items. The main data table, titled 'UPS Specification', contains the following information:

UPS Specification	
Company	Alpha Technologies
Factory Code	
UPS Model	Micro1000
Product Code	03509001
Unit Name / ID	
Serial Number	SN000000001
Rated Frequency	60 Hz
Rated Input Voltage	120 VAC
Rated Output Power	1000 VA
Rated Battery Voltage	48 VDC
Charger Current	10 A
Temperature Compensation	-5.0 mV/Cell/°C
FXM Firmware SW Version	2.06.00
Com Module SW Version	2.01.00
Mac Address	00.90.ea.c2.65.b3
Current IP Address	192.168.0.90

Note: Micro 1000 units with a green display will show the FXM Firmware SW Version as 2.06.00R.

Configuring the UATS back to UPS:

1. Ensure the UPS SUPPLY BREAKER is turned on the UATS.
2. Bring the FXM online by turning **ON** FXM INPUT & BATTERY BREAKER.
3. Make sure the FXM qualifies utility and is in **LINE** mode.
4. Test the FXM by turning **OFF** FXM INPUT BREAKER and making sure it goes to **INVERTER** mode and that output voltage is present.
5. Turn **ON** FXM INPUT BREAKER and wait until it is in **LINE** mode.
6. Switch the red switch on UATS back to **UPS**.

For assistance, contact Alpha Technical Support: Toll Free North America: 1-888-462-7487 International: +1-604-436-5547 or [Click here to report a problem.](#)