

Module Firmware Upgrade Using the CXC HP (Software V4.xx)

Summary

This procedure outlines how to upload a firmware file onto a module using the CXC HP controller web interface (screenshots taken on software version v4.01).

Equipment Necessary

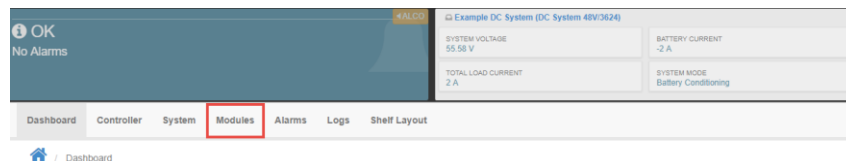
- Laptop with an Ethernet port and a Web browser (IE, Firefox, Chrome, and Microsoft Edge)
- Ethernet Cable

Procedure

Important:

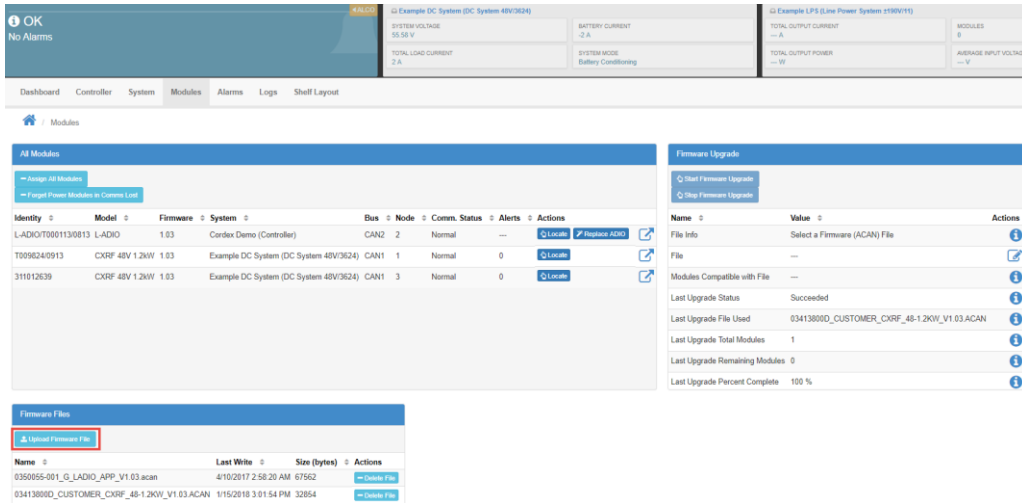
- Please note that power modules will be upgraded one by one, during which time, each module will sequentially have their output turned OFF. Please note that depending on the load, batteries may take up some of the load.
- If there are no batteries, ensure that power save is turned OFF and enough redundant modules are installed.
- Please take special care when upgrading Line Power modules (LPS36, eLimiter+, etc.). Uploading firmware onto a module that is feeding a load without redundancy will temporarily turn down the load for the duration of the upgrade.

1. Connect to the controller using an Ethernet cable. Please refer to Alpha's *MOP CXC-HP Communications* document for this procedure.
2. Click the **Modules** menu.

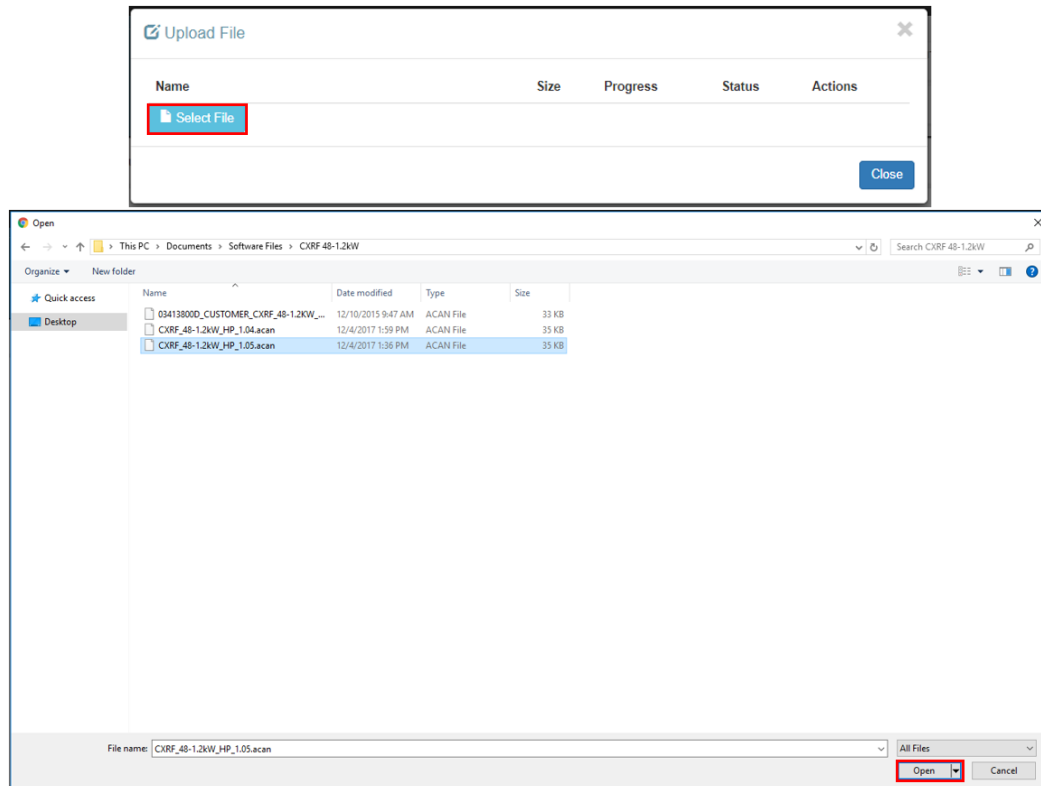


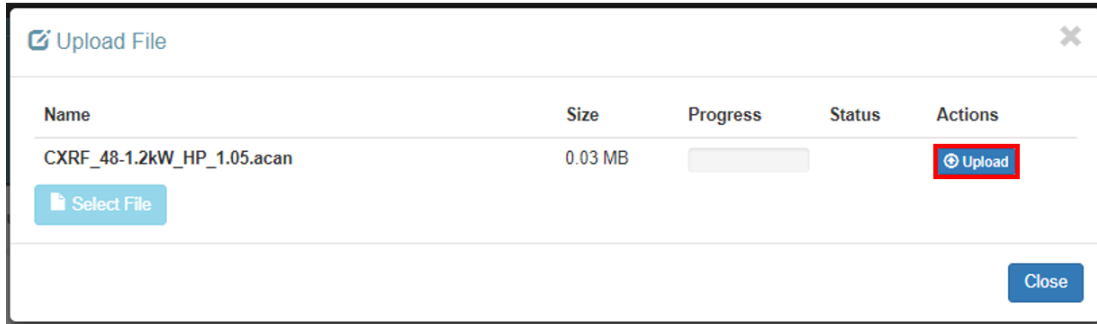
3. The serial numbers of the modules, and the current firmware, are listed under the **All Modules** category.
Please note: a module cannot be overwritten with the same version of firmware that is already on the module.
Use the **Upload Firmware File** button to get the firmware to be written onto the modules.

The most recent firmware for modules can be found at, www.alpha.ca/support/support-main-menu/software-firmware-downloads.

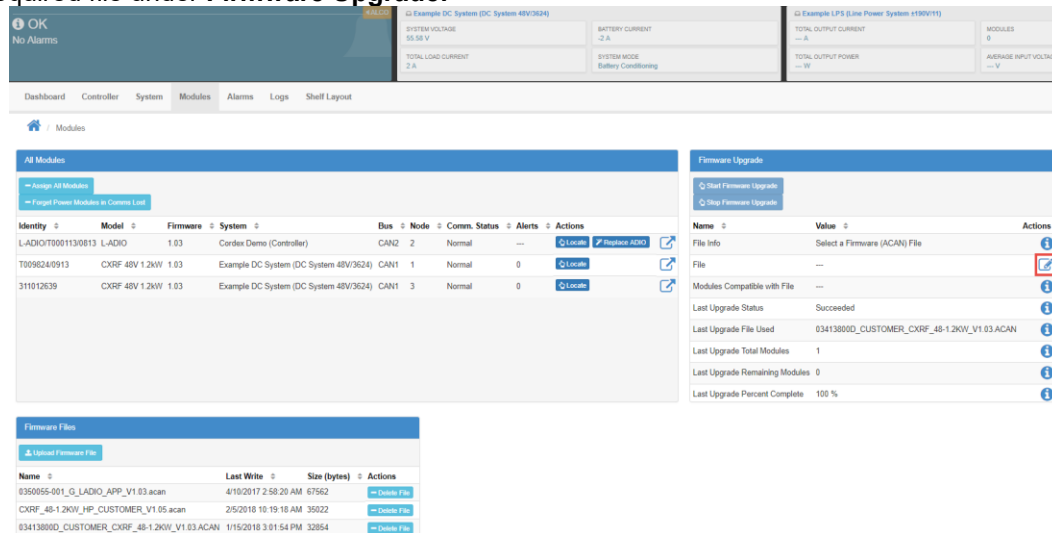


4. Click **Select File** to search for the file, and then click **Upload**.

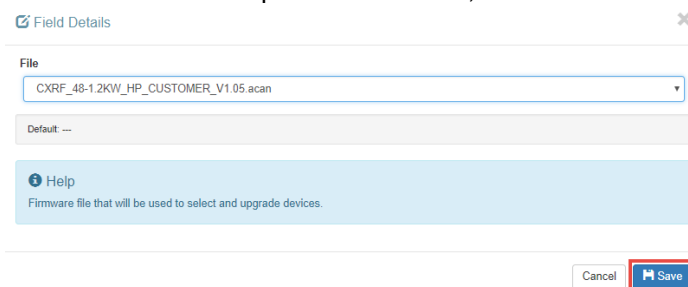




- The new uploaded firmware displays under the **Firmware Files** category. Click the button for required file under **Firmware Upgrade**.



- Select the file to be uploaded and click, **Save**.



Click **Start Firmware Upgrade**. (Note: Depending on the module, a firmware upgrade can take up to ten minutes per module.)



Identity	Model	Firmware	System	Bus	Node	Comm. Status	Alerts	Actions
L-ADIO/T000113/0813	L-ADIO	1.03	Cordex Demo (Controller)	CAN2	2	Normal	---	Locate Replace ADIO
T009824/0913	CXRF 48V 1.2kW	1.03	Example DC System (DC System 48V/3624)	CAN1	1	Normal	0	Locate
311012639	CXRF 48V 1.2kW	1.03	Example DC System (DC System 48V/3624)	CAN1	3	Normal	0	Locate

7. Verify that the firmware on the modules has been upgraded.

Identity	Model	Firmware	System	Bus	Node	Comm. Status	Alerts	Actions
L-ADIO/T000113/0813	L-ADIO	1.03	Cordex Demo (Controller)	CAN2	2	Normal	---	Locate Replace ADIO
T009824/0913	CXRF 48V 1.2kW	1.05	Example DC System (DC System 48V/3624)	CAN1	1	Normal	0	Locate
311012639	CXRF 48V 1.2kW	1.05	Example DC System (DC System 48V/3624)	CAN1	3	Normal	0	Locate

End of Procedure

For additional assistance or if you have any questions regarding this notification, please contact Alpha Technical Support at 1-888-462-7487 or www.alpha.ca/report-a-problem.

For assistance, contact Alpha Technical Support:

Toll Free North America: 1-888-462-7487

International: +1-604-436-5547

Monday - Friday, 7:00 AM - 5:00 PM PST for regular inquires

24/7 for emergency support

Your Power Solutions Partner

F-MKT-02 Rev 1.2

Copyright © 2018 Alpha Technologies. All Rights Reserved. Alpha® is a registered trademark of Alpha Technologies.

Member of The Alpha Group™ is a trademark of Alpha Technologies.

For more information visit www.alpha.ca

0470350-00 Rev A (02/2018)

Member of the Alpha Group