

## MBS Support Bracket Installation

### Summary

This procedure outlines how to inspect, and if necessary, to install the support bracket in the **0200221-INT** and **0200220-INT** external MBS to improve alignment between the dial installed in the door, and the solenoid lockout device.

**Caution: Read this entire procedure before continuing. Do not attempt to rotate the switch handle past the current position to avoid a service interruption, see Figure 1 in step 7.**

### Equipment or Tools Necessary

- Support bracket kit
- 1/8" drill bit
- 13/64" drill bit
- Phillips head screw driver
- Drill
- Painters tape

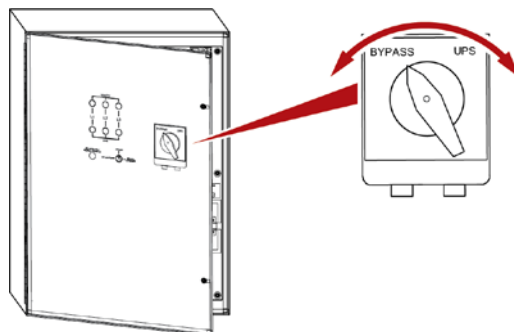
### Inspection Procedure

**Caution: Hazardous energy may be present. Only qualified electricians should open the cabinet.**

1. Initial alignment verification: Verify that the switch is electrically locked. Gently try to rotate switch handle. If it rotates, it is not in alignment. If this is the case, go to the Bracket Install Procedure.
2. Open the door.
3. Inspect clutch for cracks or other service impacting damage. Surface scratches are not service impacting
4. Verify clutch alignment by: covering handle clutch with blue painter's tape, close the door and press firmly.

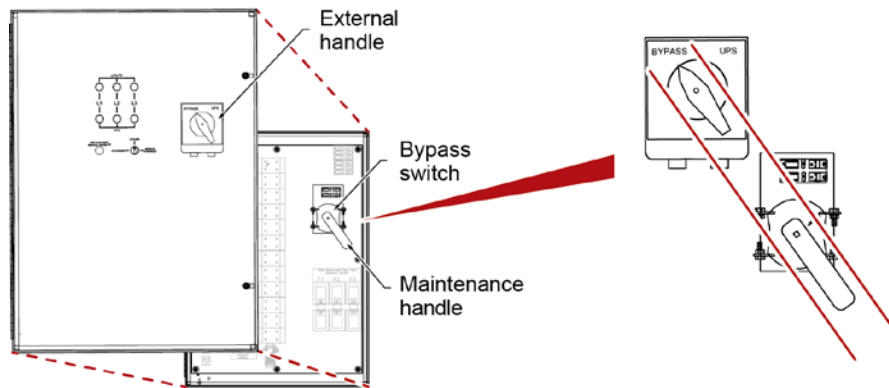
**Note:** *When closing the door of the MBS, ensure that the outside handle, and the inside maintenance handle, are aligned. If the handles are not aligned when the door is closed, turn the outside handle until it engages with the maintenance handle. You will hear a clicking sound when the two handles engage.*

5. Align the outside handle and the maintenance handle.

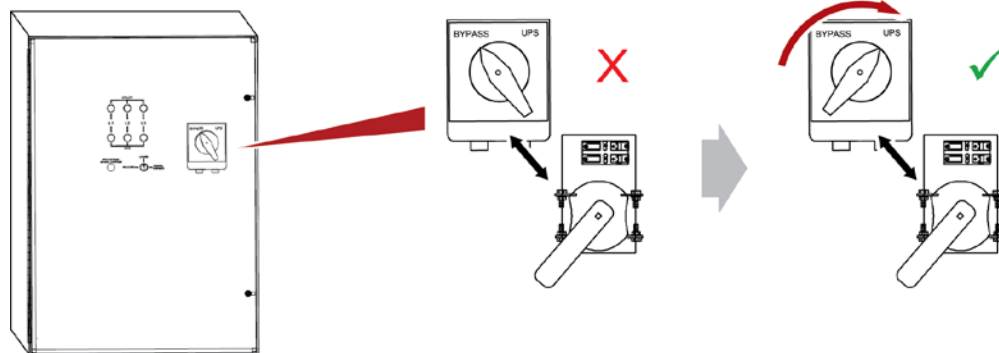


**Note:** When the door is opened, the outside handle may move independently of the inside maintenance handle.

6. Ensure the outside handle and the inside maintenance handle are aligned.



7. If the two handles are not aligned when the door is closed, turn the outside handle until it engages with the maintenance handle. **Note:** You will hear a clicking sound with the two handles engage.



**Figure 1 - Door Alignment**

9. Open door and inspect the tape for compression from the mating clutch.
10. If the switch does not align with the door, implement the *Bracket Installation Procedure* that follows, during a maintenance window.
11. Check the alignment after the bracket installation.
12. Remove the tape.

### Bracket Installation Procedure

**Caution: This procedure does not cover any safety requirements for working on a live system. If the unit is live, remove all power from the external MBS, and follow all lockout procedures.**

1. Open the front door.
2. Fasten the bottom of the bracket to the solenoid lockout device using the two screws provided, see the following figure.

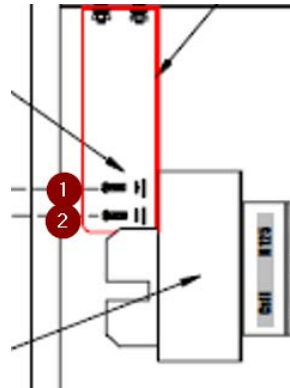


Figure 2 - Initial Bracket Fit

3. Mark the four holes at the on the top of the MBS.
4. Remove the MBS bracket.
5. Center punch the hole locations.
6. Protect the interior from metal debris.
7. From the inside, drill a pilot hole using a 1/8" drill bit.
8. From the outside, drill-out the pilot hole with a 13/64" drill bit, ensure that the drill bit does not go into the solenoid.
9. Hand tighten the bracket to the roof of the enclosure.
10. Hand tighten the bracket to the solenoid lock-out device.
11. Ensure alignment to the door clutch by adjusting the bracket/switch.
12. Fully tighten the fasteners.
13. Clean out any debris.

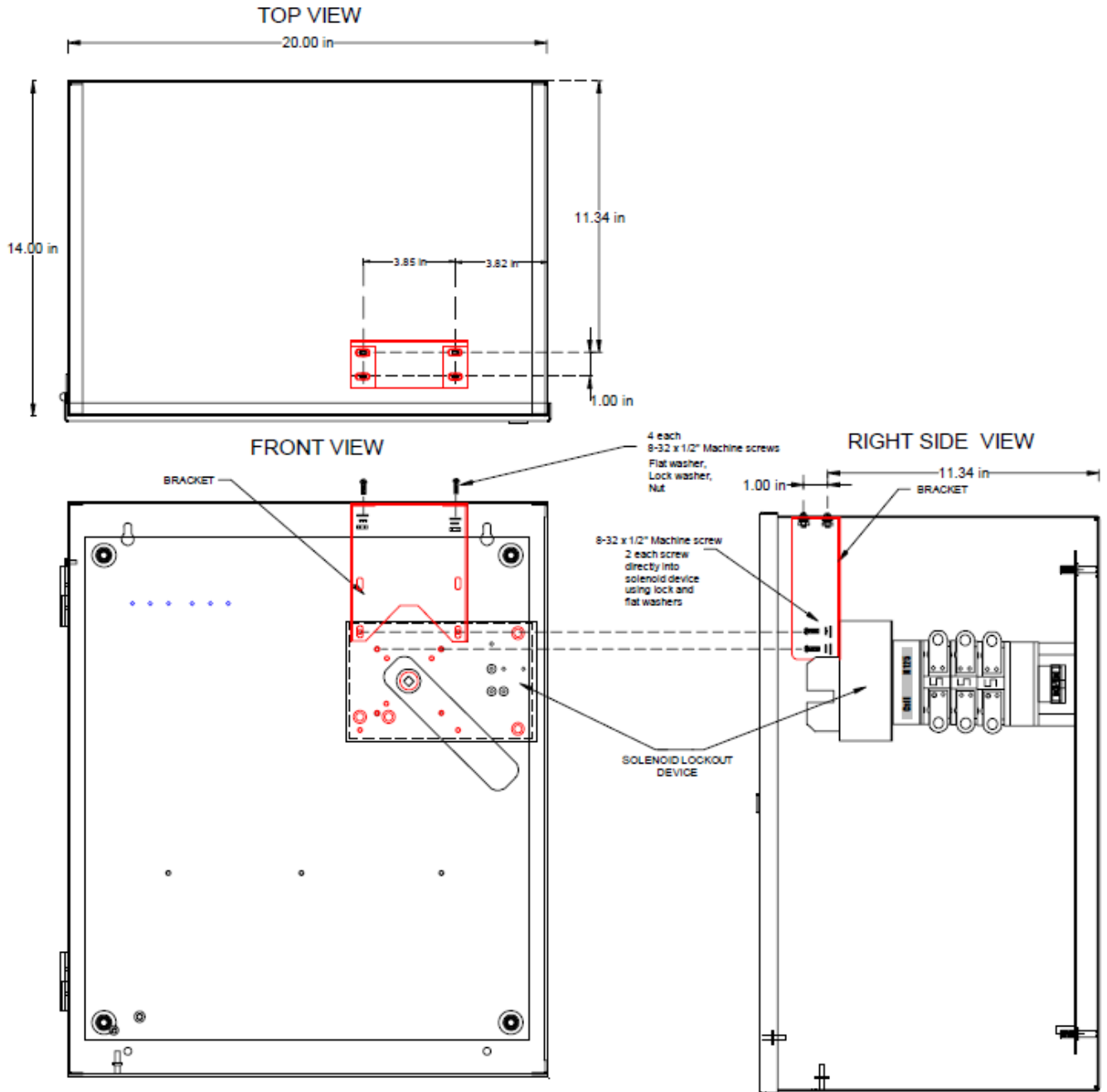


Figure 3 - 0200221-INT

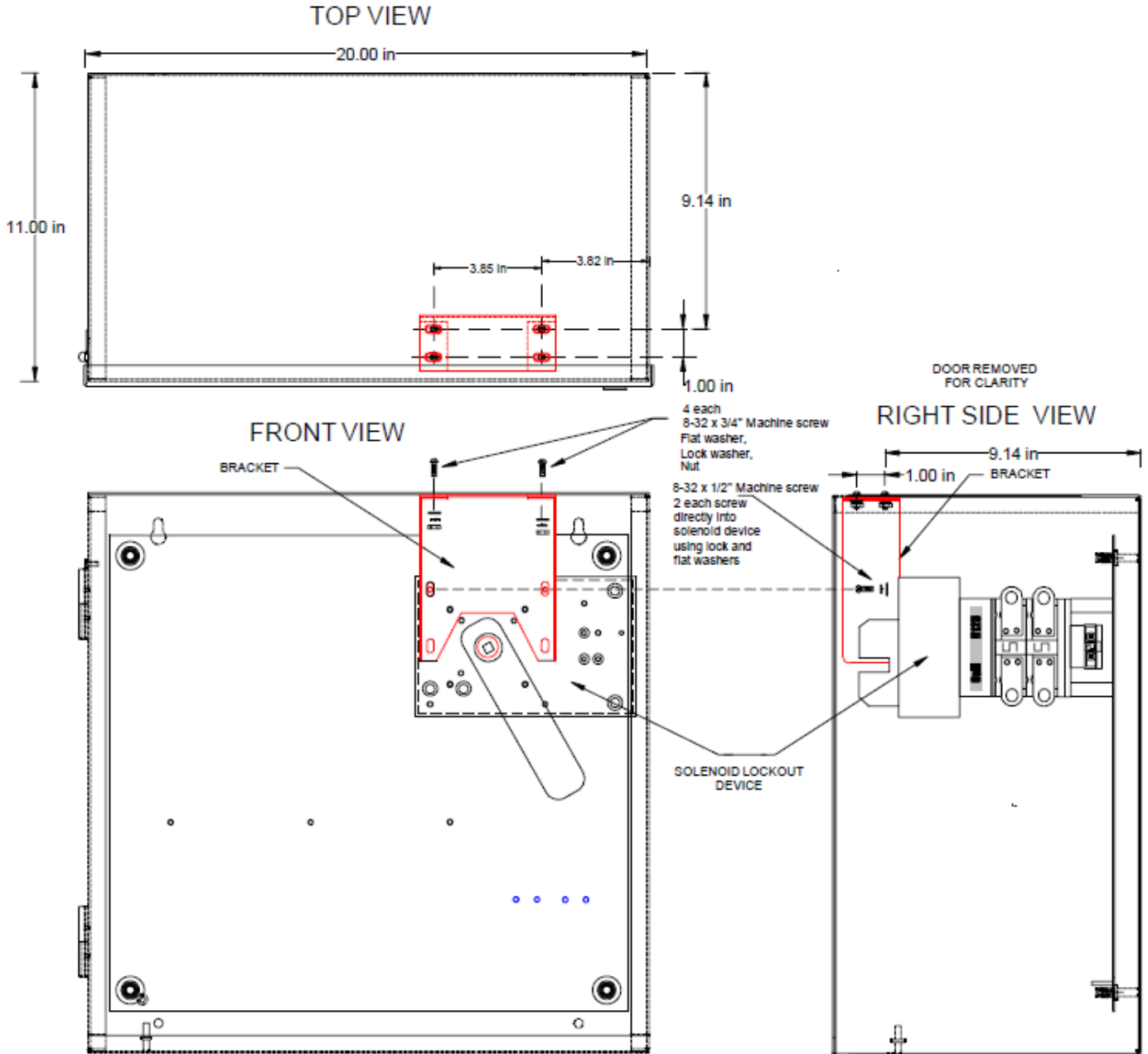


Figure 4 - 0200220-INT



Figure 5 - Final Assembly

**End of Method of Procedures**

**Charlie Manson**

Director, Customer Services  
Alpha Technologies Ltd.  
[Charlie.Manson@alpha.ca](mailto:Charlie.Manson@alpha.ca)

**Daljit Hothi**

Product Management  
Alpha Technologies Ltd.  
[Daljit.Hothi@alpha.ca](mailto:Daljit.Hothi@alpha.ca)

**For assistance, contact Alpha Technical Support:**

Toll Free North America: 1-888-462-7487

International: +1-604-436-5547

Monday - Friday, 7:00 AM - 5:00 PM PST for regular inquiries

24/7 for emergency support

[Click here to report a problem](#)

*Your Power Solutions Partner*

F-MKT-08 Rev 1.0

Copyright © 2018 Alpha Technologies. All Rights Reserved. Alpha® is a registered trademark of Alpha Technologies.  
Member of The Alpha Group™ is a trademark of Alpha Technologies.

For more information visit [www.alpha.ca](http://www.alpha.ca)

0470395-00 Rev A (12/2018)

Member of the Alpha Group