

Ethernet Connectivity Using a Static IP (CXC HP Controller Software v4.xx)

Summary

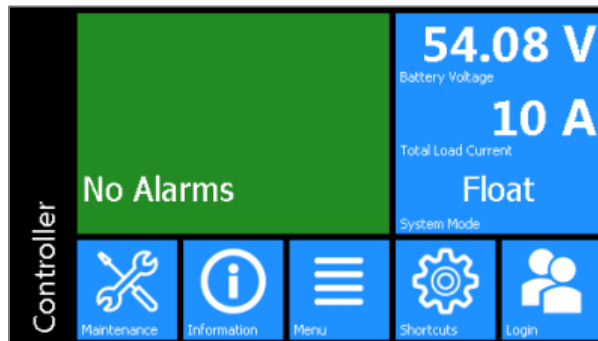
This procedure outlines how to set up communications with an Alpha CXC-HP controller through a local or remote Ethernet connection configured to a static IP. (screenshots taken on software version v4.10)

Equipment or Tools Necessary

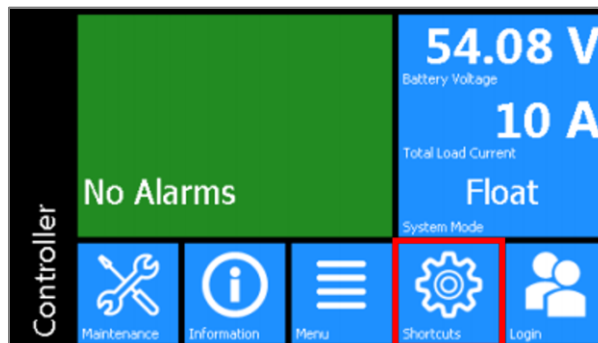
- Laptop with an Ethernet port and a web browser (such as Internet Explorer (version 9 or higher), Firefox or Google Chrome)
- Ethernet cable (crossover for XP or straight-through for Vista/7/10)

Procedure

1. If accessing the controller with a remote connection, proceed to step 9.
If locally connecting to the front ethernet port of the controller, and the IP of it is set to the default (10.10.10.201) please proceed to step 2.
 - a) Press the black **Home** button (denoted by a house icon), on the front of the controller. This displays the main page of the controller.



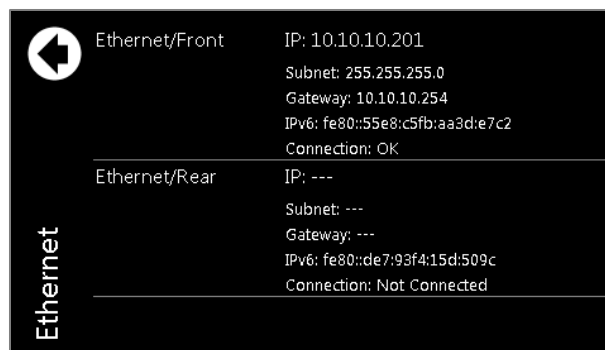
- b) Press **Shortcuts**.



c) Press **Ethernet**.



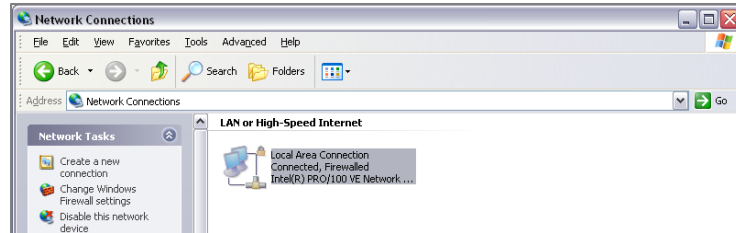
d) Note the IP, subnet and gateway of the **Ethernet** port that you are connecting to (typically the front port).



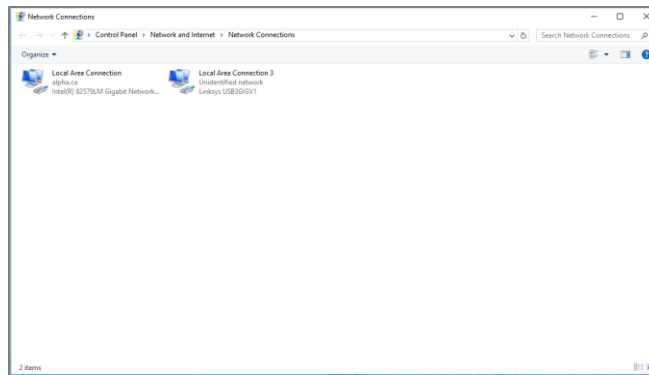
2. Connect the Ethernet cable to the Ethernet port to your laptop and to the controller.
3. Turn off wireless internet and/or Bluetooth. They may interfere with the LAN connection.
4. Set up the computer, and then launch the **Control Panel**.
 - a. For Windows 2000, go to **Network and Dialup Connections**
 - b. For Windows XP, go to **Network Connections**
 - c. For Windows Vista/7/10, go to **Network and Sharing Centre**
5. For Windows Vista/7/8/10, click **Change adapter settings** on the left-hand side menu.
6. Right-click **Local Area Connection (LAN)**, and then choose **Properties**.

If there is more than one LAN connection, choose the one that indicates that the controller is connected. To verify this, unplug, and then plug in the Ethernet cable. The LAN should change state (Windows Vista/7/10 only).

Windows XP

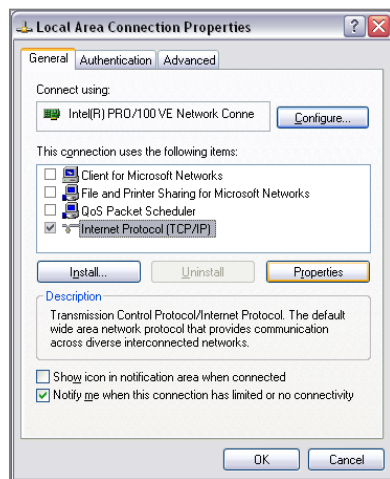


Windows Vista/7/10

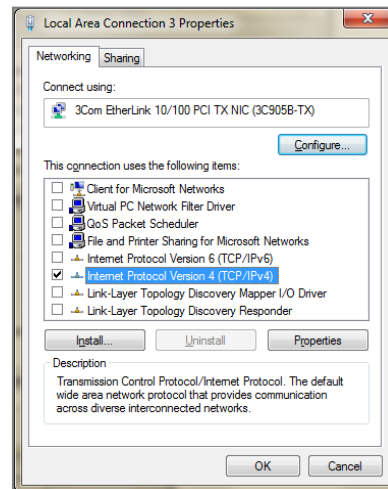


7. Select the Internet Protocol (TCP/IP) or Internet Protocol Version 4 (TCP/IPv4) and then click **Properties**.

Windows XP

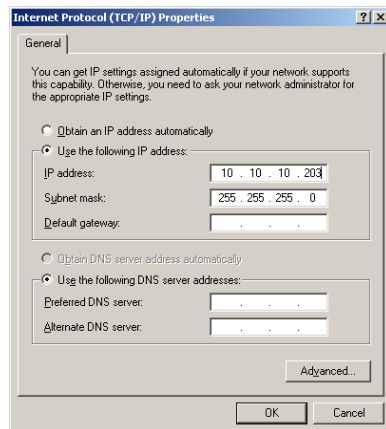


Windows Vista/7/10

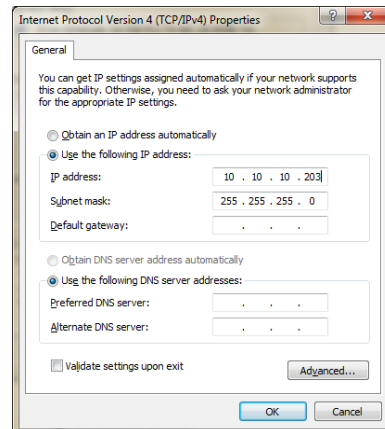


8. Select, **Use the following IP address**. Set the IP to a value which is a digit above the configured IP. (For example, to configure the port to the default IP, change the IP to be 10.10.10.203). The subnet will be the same as the one configured into the controller. Leave the gateway blank.

Windows XP



Windows Vista/7/10



9. Open your choice of web browser. Enter the IP address that is configured for the controller. (note that this will not be the adapter setting configured in step 8, which is one higher). The username and password login window will be displayed.



10. If the username and password has been configured, enter that username and password. If not, the default username is **admin** and the password is **admin**.
11. Once logged in the home page of the controller, the web interface displays.

End of Method of Procedure

For assistance, contact Alpha Technical Support Toll Free North America: 1-888-462-7487
International: +1-604-436-5547 or [Click here to report a problem](#)