

CXC Ethernet Communications Setup Procedure

Summary

This procedure outlines how to set up communications with an Alpha CXC controller.

Equipment Necessary

- Laptop with an Ethernet port and Internet Explorer
- Ethernet cable (crossover for XP or straight-through for Vista/7/10)

Connecting to the Controller

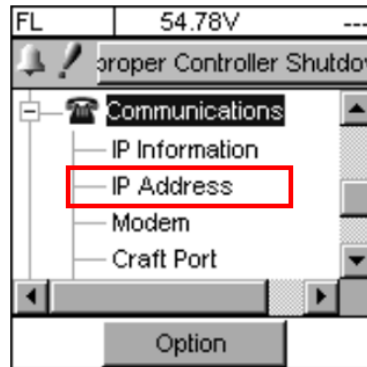
1. If the controller IP has been changed, obtain the IP from the administrator. If the IP information is available or is set to the default (10.10.10.201), skip this step and proceed to step 2.
 - (a) On CXC controllers without a touch interface, the IP can be reset to the default by pressing the RST button on the front of the controller for 3 seconds.
 - (b) On CXC controllers with a touch interface, the IP can be viewed, reset or adjusted by logging in through the touchscreen and adjusting the IP accordingly.

For controllers with a touchscreen continue as follows:

Log into the controller by tapping on the lower right arrow (red) on the touchscreen, and then tapping the **Login** button (orange).

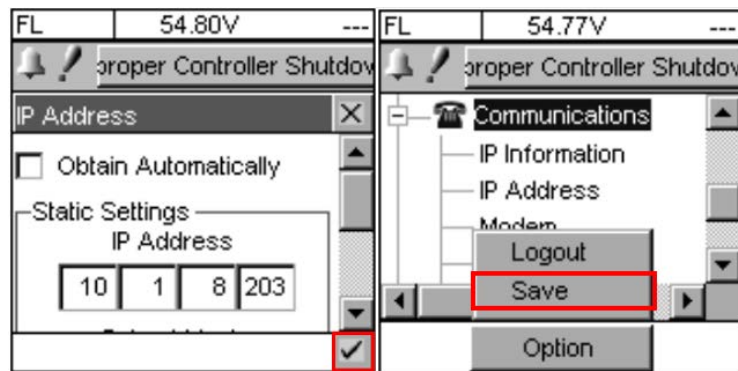


Use the slider on the right-hand side to go to the **Communications** menu, and then tap **IP Address**. Change the static IP to your required value in this menu.



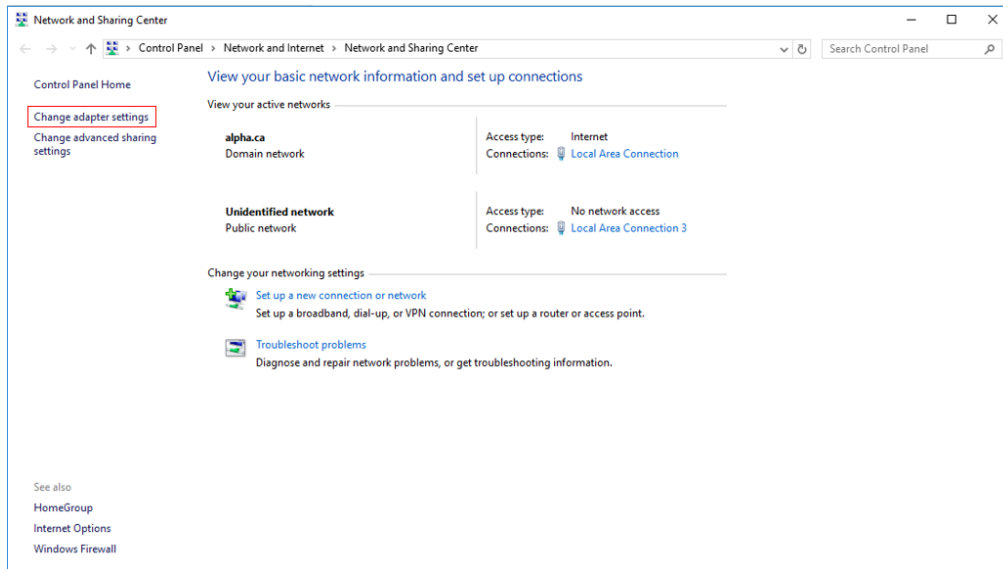
Once the IP has been configured, tap the checkbox on the bottom right corner to return to the main menu.

In the main menu, under **Options**, tap on the **Save**.



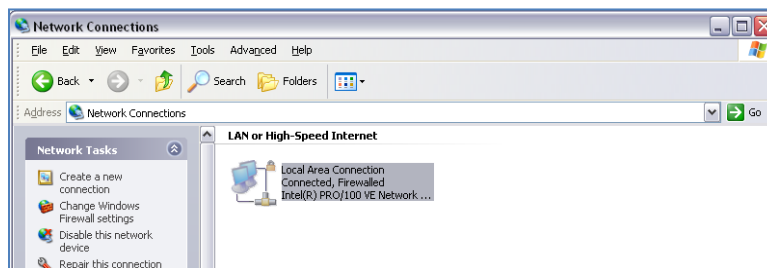
2. Connect the Ethernet cable to the Ethernet port on your laptop and to the controller.
3. Turn off the wireless Internet, because this may interfere with the LAN connection.
4. Set up the computer and launch the **Control Panel**.
 - a. For Windows 2000, go to **Network and Dialup Connections**
 - b. For Windows XP, go to **Network Connections**
 - c. For Windows Vista/7/10, go to **Network and Sharing Centre**

- For Windows Vista/7/10, click **Change adapter settings** on the left-hand menu.

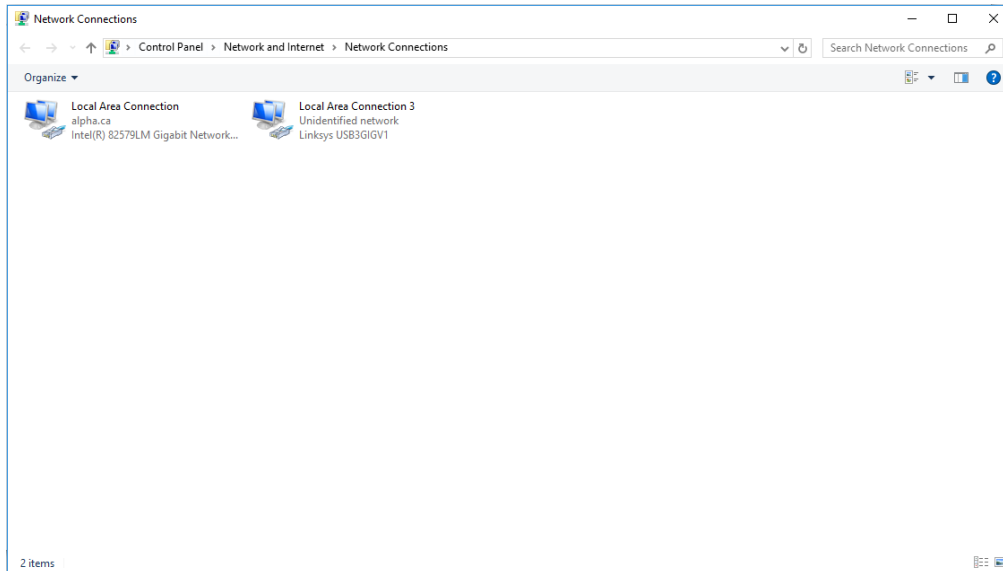


- Right-click **Local Area Connection (LAN)**, and then choose **Properties**. If there is more than one LAN connection, choose the one that indicates that the CXC controller is connected. To verify, unplug, and then plug in the Ethernet cable, the LAN should change state (Windows Vista/7/10 only).

Windows XP:

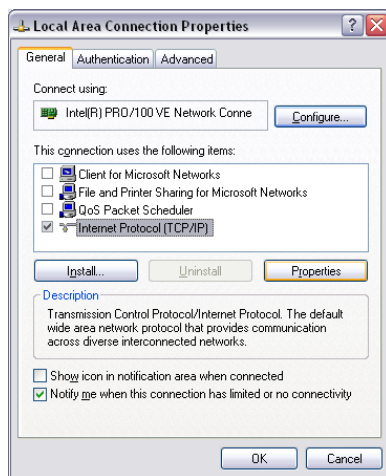


Windows Vista/7/10:

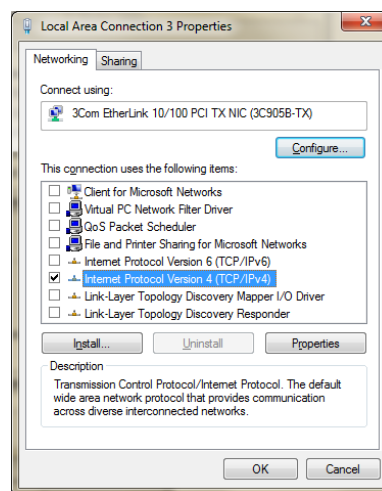


7. Select the Internet Protocol (TCP/IP) or Internet Protocol Version 4 (TCP/IPv4) and then click **Properties**.

Windows XP:



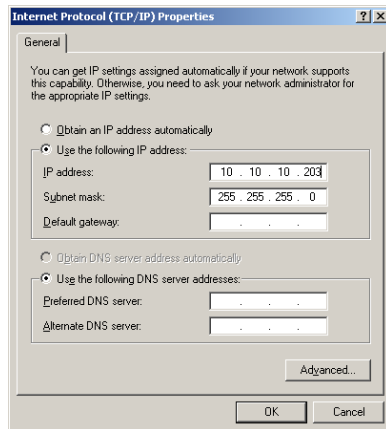
Windows Vista/7/10:



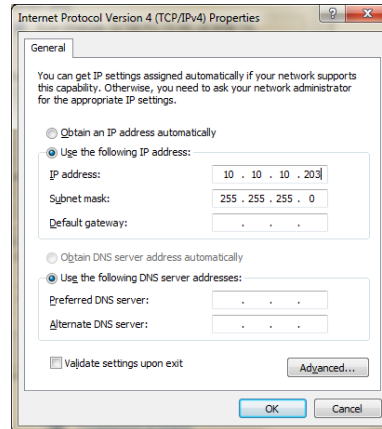
8. Select **Use the following IP address**.

To avoid duplicate IP addressing, change the Windows IP to a value one digit higher than the controller's IP address.

Windows XP:



Windows Vista/7/10:



For example, if the controller is set up for the default IP (10.10.10.201) change the Windows IP value to be 10.10.10.202 and Subnet Mask to be 255.255.255.0.

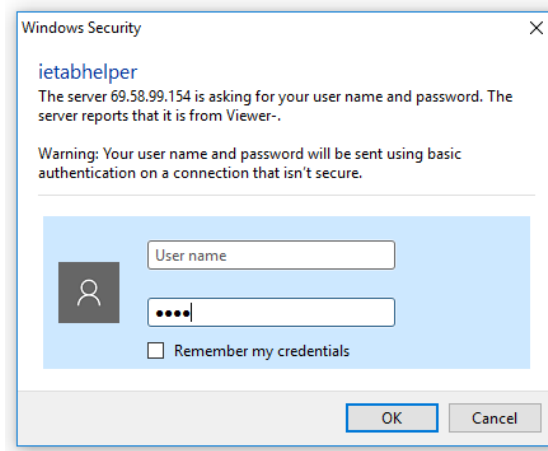
As a second example, if the controller is set up to a non-default IP such as 69.58.99.154, change it to 69.58.99.155 and so on.

Leave the other fields blank, and click **OK** to accept the changes.

9. If the IP is configured to the default, launch Internet Explorer and type 10.10.10.201 into the web browser or enter the IP address that is configured for the controller (not the adapter setting configured in step 8). The username and password login window display.

If the login screen does not display, the IP may need to be reset. Refer to step one.

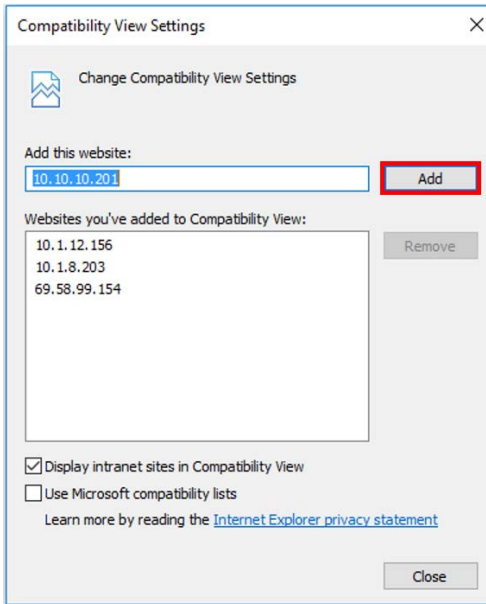
10. Enter your assigned username. The default password is **1234**. If a username and password has been configured, enter that username and password.



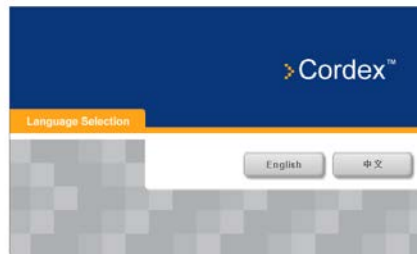
11. Hold down **Alt-T** to open the **Tools** menu, and click **Check Compatibility View**.



12. Ensure that the controller IP is in the bottom box. If not, press the **Add** button, and enter the IP address.



13. Select your language on the landing page.



14. Hold down **Alt-T** to bring up the **Tools** menu, and hover over **Pop-up Blocker**, to ensure **Pop-up Blocker** is turned off.

If the button says, **Turn off Pop-up Blocker** it is currently turned on. Click the button to disable **Pop-up Blocker**.

If the button says, **Turn on Pop-up Blocker** it is currently turned off. This is correct, do not change the setting. The controller is now connected.

End Method of Procedures