



Cordex Controller Load Current Display No Shunt

Summary

This procedure describes the process of redefining the **Load Current** when the controller is installed without an external load shunt. Load Current will be defined as the Total Rectifier Current.

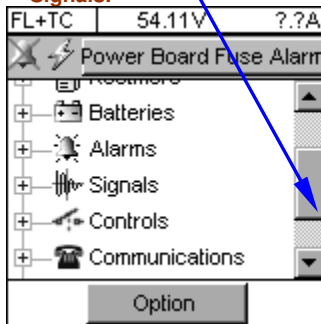
In the example below the Load Current will be changed from I1 to Total Rectifier Current using the **LCD Touch Screen** followed by **Web Interface**.

Tools Required

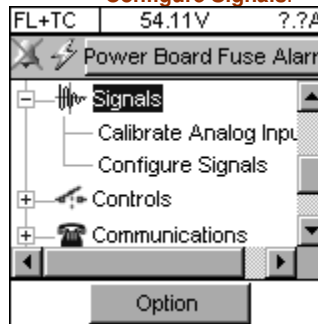
- CXC Manual
- Laptop

LCD Touch Screen

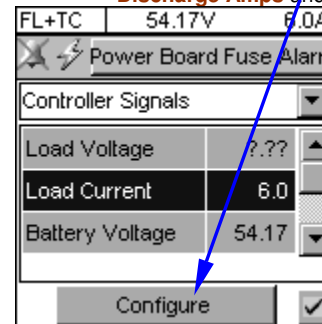
1. Use the scroll bar to access **Signals**.



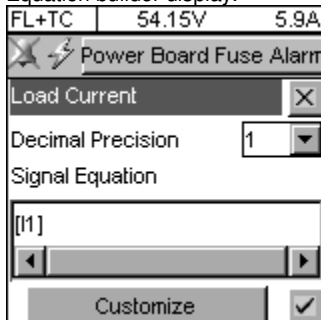
2. Tap on **Signals and Configure Signals**.



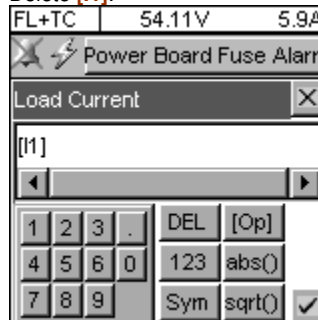
3. Select **Load Current or Discharge Amps** and tap on **Configure**



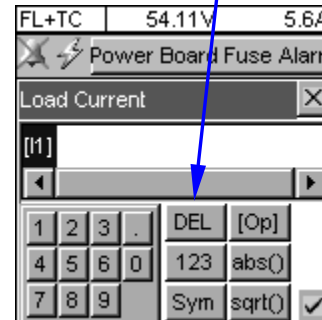
4. Tap on **Customize**
Equation builder display.



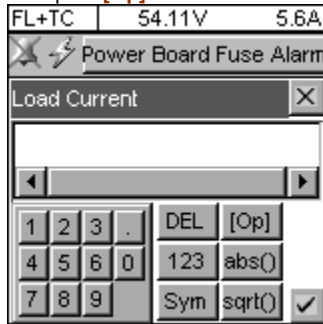
5. This brings you to the
Delete **[I1]**.



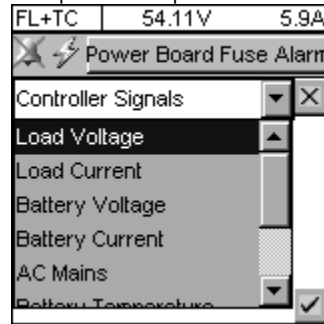
6. Select **[I1]** and tap **DEL** to



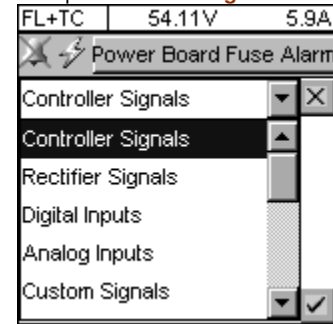
7. Tap on **[Op]** list



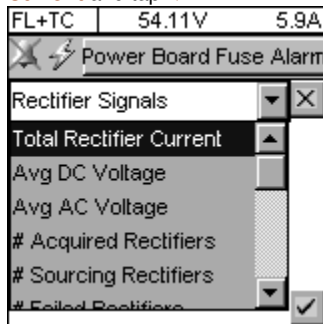
8. Tap on the drop down selection



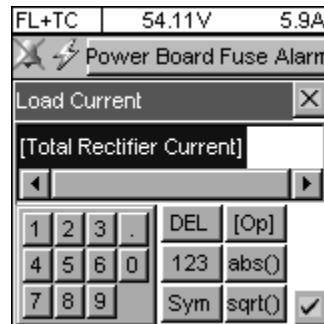
9. Tap on **Rectifier Signals**.



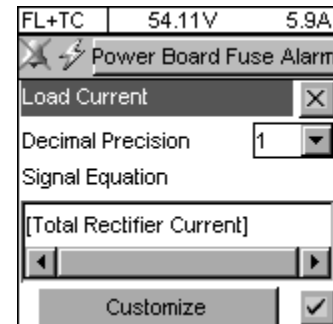
10. Tap on **Total Rectifier Current** and tap √.



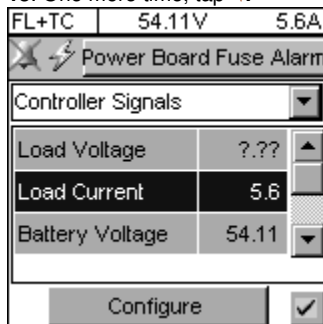
11. Tap √.



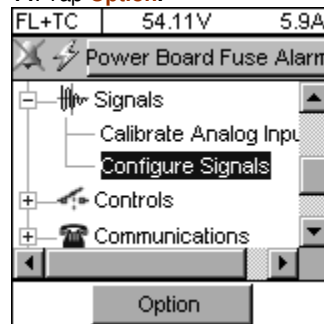
12. Again tap √.



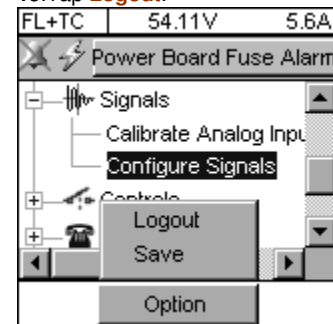
13. One more time, tap √.



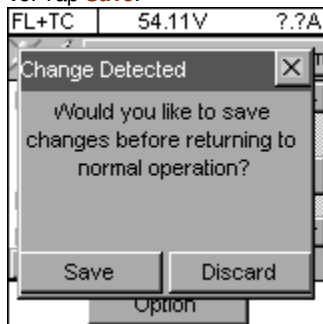
14. Tap **Option**.



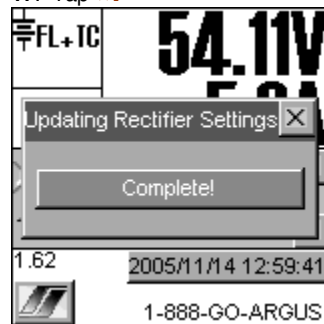
15. Tap **Logout**.



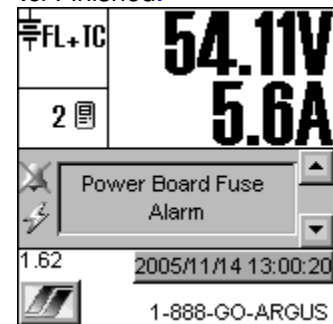
16. Tap **Save**.



17. Tap **x**.

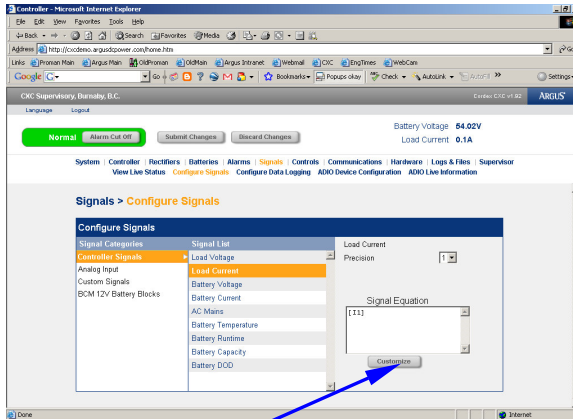


18. Finished.

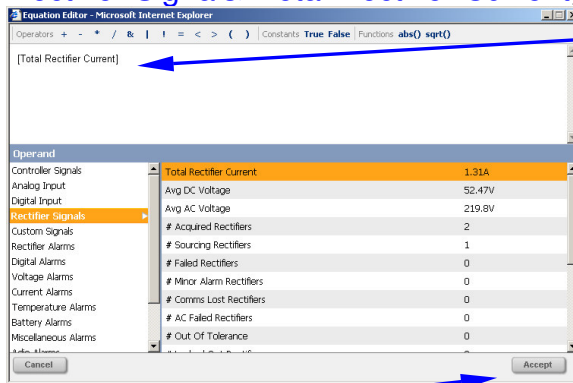


Web Interface

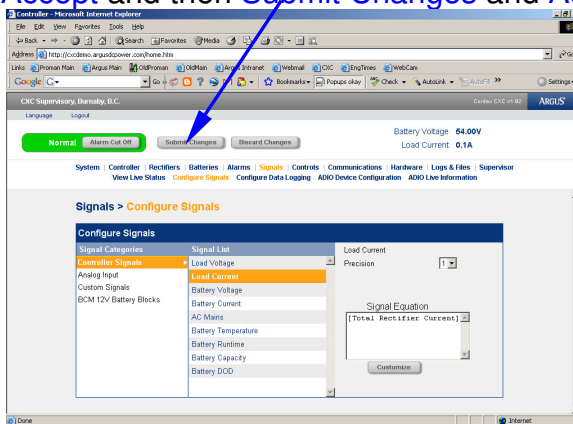
1. Log into the controller and go to **Signals > Configure Signals > Controller Signals** then select **Load Current**.



2. Then press **Customize**.
3. Highlight **[11]** and delete it.
4. Select **Rectifier Signals > Total Rectifier Current**, this will be displayed in the equation screen as seen.



5. Press **Accept** and then **Submit Changes** and **Accept Changes**.



Thank you for choosing Argus Technologies