



# Cordex Controller Internal Modem Setup

## Summary

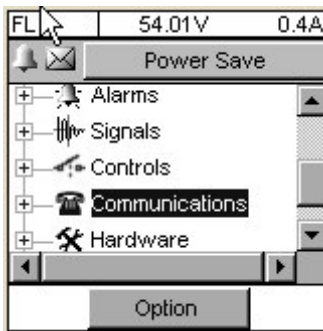
This procedure describes the setup of the controller for its Internal Modem. Setup will be performed using the **LCD Touch Screen** followed by **Web Interface**.

## Tools Required

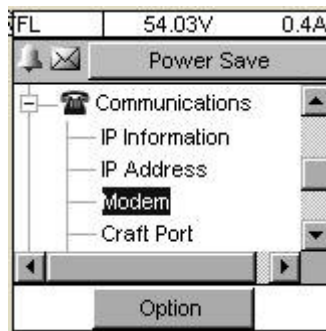
- CXC Manual

## LCD Touch Screen

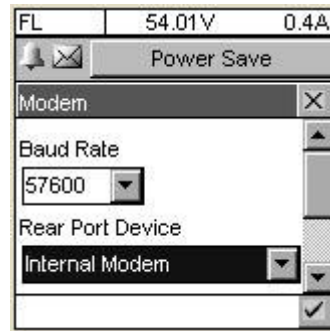
1. Tap on **Communications**



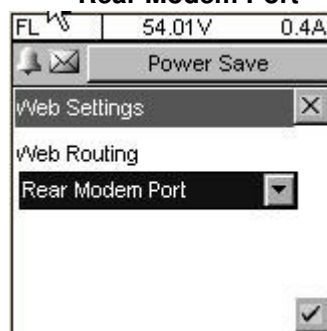
2. Tap on **Modem**.  
to **57600** and Internal Modem  
for the **Rear Port Device**.



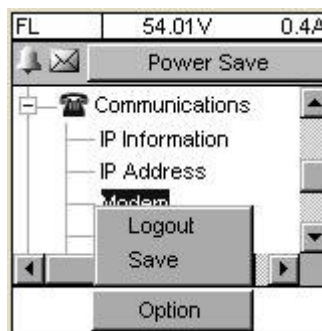
3. Set **Modem Baud Rate**  
to **57600** and Internal Modem  
for the **Rear Port Device**.



4. Scroll to **Web Settings**.  
Set **Web Routing** to  
**Rear Modem Port**



5. **Logout** and save  
changes.

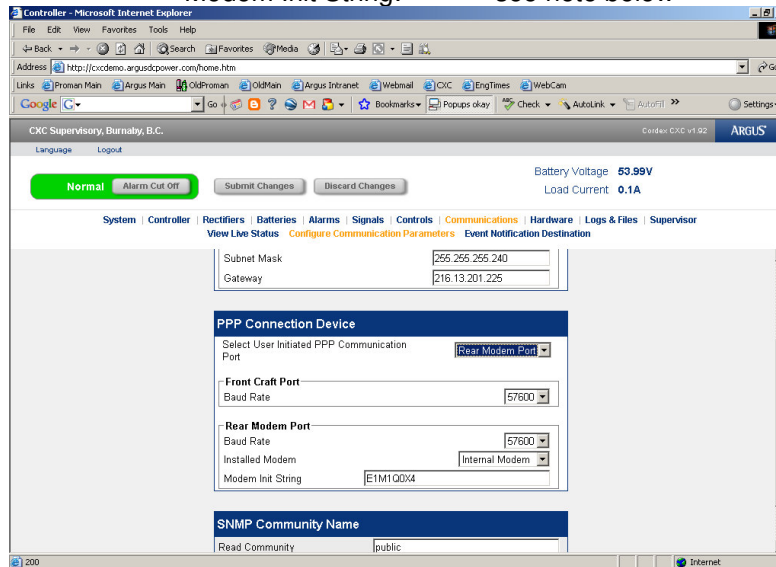


## Web Interface

1. Log into the controller and go to [Communications>Configure Communications Parameters](#).

2. Scroll down to [PPP Connection Device](#) and set parameters as follows:

Select User Initiated PPP Communication Port: Rear Modem Port  
Baud Rate: 57600  
Installed Modem: Internal Modem  
Modem Init String: see note below



**Note:** To set the modem number of ringing, edit the Modem Init String to (via Web interface only):

**E1MIQ0X4S0=N** where: **N** = is the number of rings. Recommended N value is between 0 to 5.

**Thank you for choosing Argus Technologies**