

# MOP for Turning OFF Power Save

## Summary

This procedure explains the steps for turning OFF the Power Save Feature in the Cordex Rectifier Shelf or Power System.

## Tools/Reference Documents required

- Laptop and a Cross-over Ethernet Cable

## Applicable Part Number

Applies to any Cordex Rectifier System with CXC Series controller.

## Procedures

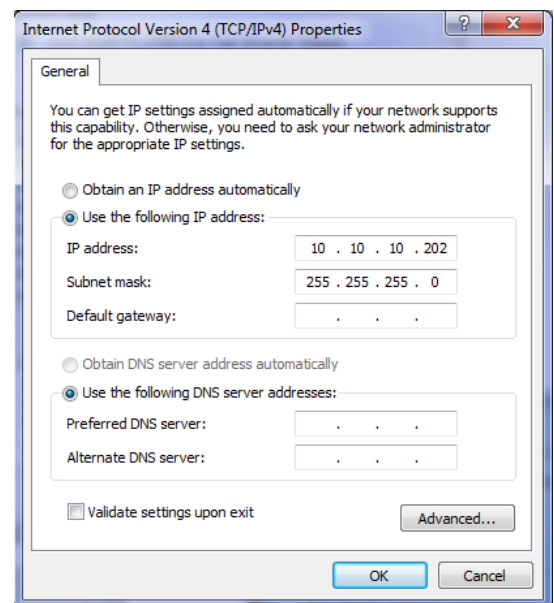
*Caution: Turning off Power Save in a live system can be done safely provided there are batteries connected. On live systems without batteries, the load may drop due to rectifier's power cycling during the transition.*

### 1. Connecting to the CXC via the Web Interface

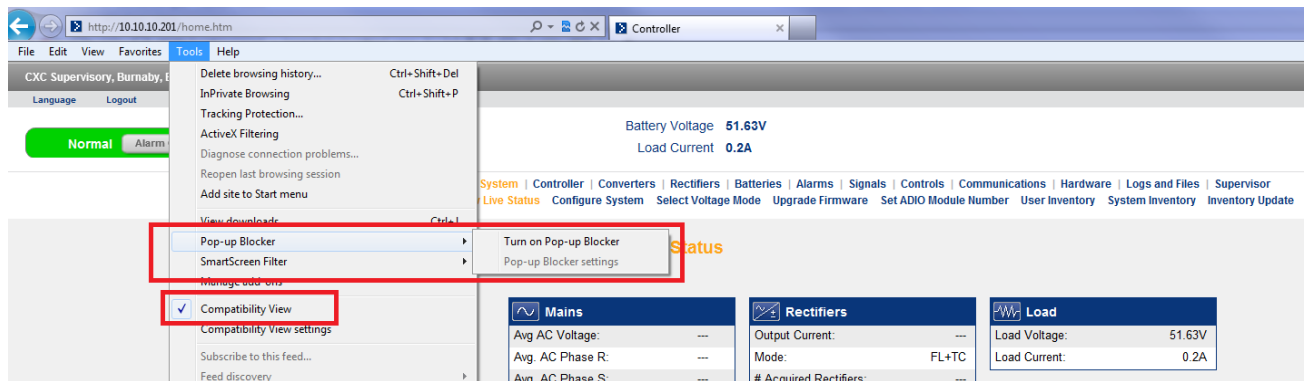
1.1. Connect a laptop to the CXC controller via a cross-over Ethernet cable. Set the Laptop's LAN properties – Internet Protocol version 4 (TCP/IPv4) to IP address and Subnet Mask as shown on the right image.

1.2. Open Internet Explorer and type in “10.10.10.201”.

1.3. Username and password log-in window will pop up. Enter your name in the user name field. The default password is “1234” (without the quotes)

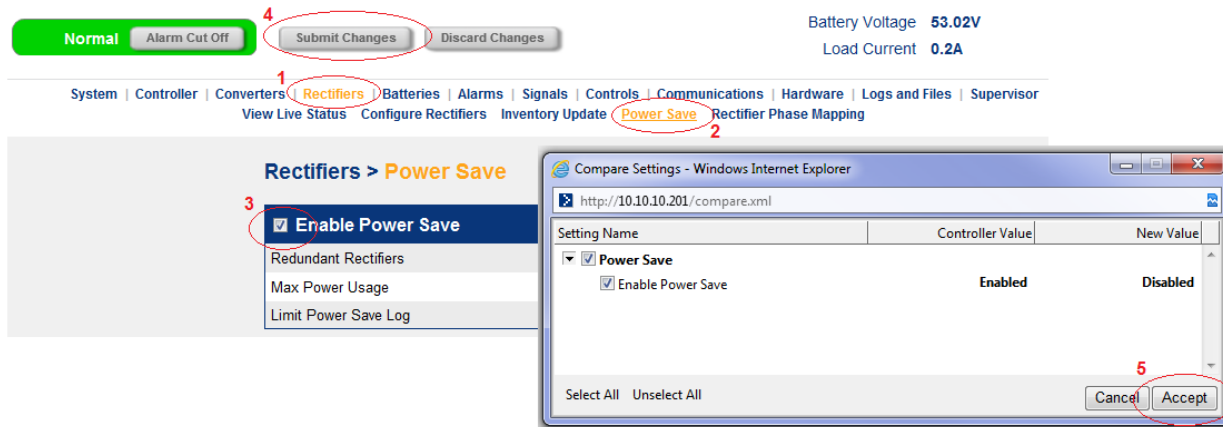


- 1.4. Once logged-in, make sure pop-up blocker is off and that compatibility view is enabled. Compatibility view is only applicable when using Internet Explorer 8 or higher.



## 2. Disable Power Save.

- 2.1. On the Menu, click on “Rectifiers” (1) then “Power Save” (2). Uncheck the box (3) to disable Power Save.
- 2.2. Then click on “Submit Changes Button” (4) to effect the change and click the “Accept Button” (5).



- 2.3. The rectifier’s “Power On” and “DC On” green lights should be lit and all rectifiers should start load sharing.



*Your Power Solutions Partner*

Visit us at [www.alpha.ca](http://www.alpha.ca)

In case assistance is needed in carrying out this procedure, please contact Alpha Technical Support at 1-888-462-7487.

Sincerely,

Charlie Manson  
Manager, Customer Services  
Alpha Technologies Ltd.