

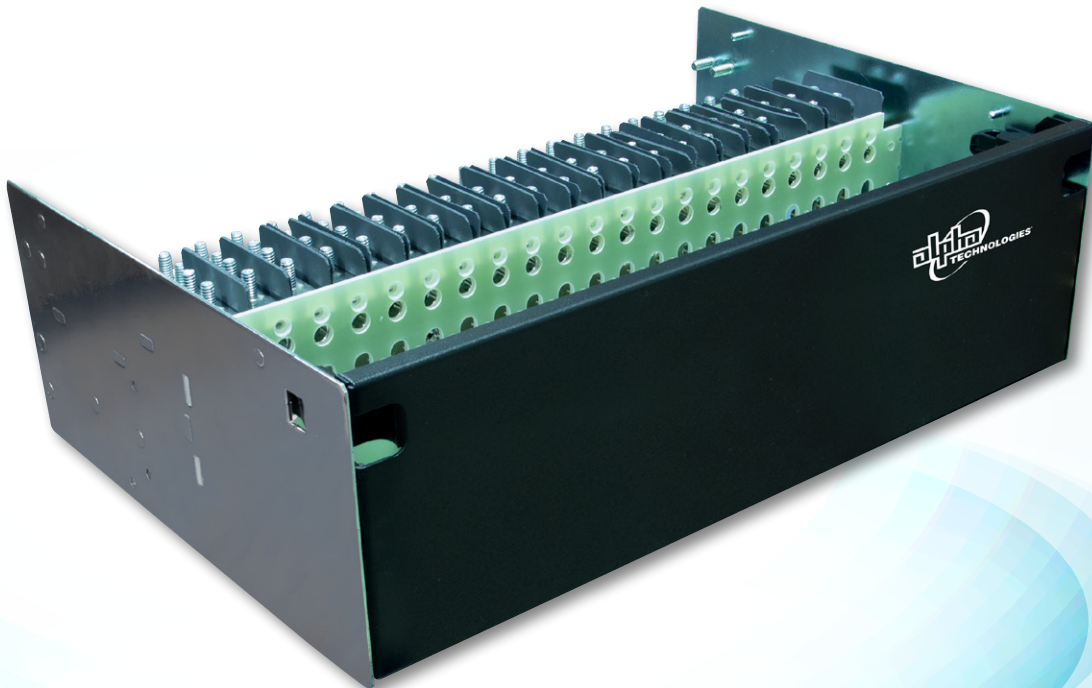
CXDM-E3

400A Distribution Panel



Your Power Solutions Partner

- -48V, 400A front access distribution panel for small to medium 48Vdc powering applications
- High breaker density - 26 breakers in 3RU
- High temperature rated design for harsh outdoor installations



The CXDM-E3 is a high density, front access distribution panel and is the ideal solution for small to medium sized 48Vdc applications. With universal 19/23" mounting, high temperature operation and high breaker density, it is a perfect solution for a wide variety of installation scenarios including those in harsh, outdoor environments.

The distribution center provides up to 26 load breaker positions and integrated shunt. All breakers, connections and monitoring I/O connections are front accessible.

The CXDM-E3 can be integrated easily into customer provided relay racks or enclosures or can be ordered factory installed into various Alpha relay rack configurations.

Power



CXDM-E3 400A Distribution Panel

ORDERING INFORMATION		
S.No	Part Number	Panel Description
1	0918201-100	CXDM-E3, 19/23", 3RU, -48V, 400A, 21 Load Breakers, Interface Board
2	0918301-300	CXDM-E3, 23", 3RU, -48V, 400A, 26 Load Breakers, Interface Board

NOMINAL SPECIFICATIONS		
Model	19" CXDM-E3	23" CXDM-E3
Electrical		
Panel Voltage	-48V	-48V
System Capacity (Max)	400A	400A
Environmental		
Temperature	-40 to 65°C (-40 to 149°F)	-40 to 65°C (-40 to 149°F)
Humidity	0 to 95% RH non-condensing	0 to 95% RH non-condensing
Mechanical		
Mounting	Flush/Center	Flush/Center
Dimensions	5.25"H x 19"W x 17.4"D	5.25"H x 23"W x 17.4"D
Weight (System)	13.6kg (30lbs)	15.8kg (35lbs)
DC Connections		
Input connections	3/8" Holes on 1" Center*	3/8" Holes on 1" Center*
Hot Positions	21x Load breakers	26x Load breakers
	21x sets of 1/4" Studs on 5/8" Centers	26x sets of 1/4" Studs on 5/8" Centers
Return Positions	21x sets of 1/4" Studs on 5/8" Centers	26x sets of 1/4" Studs on 5/8" Centers
System Access	Front Access	Front Access
Controls		
Monitor	Monitor via discrete signals to externally mounted Alpha controller	Monitor via discrete signals to externally mounted Alpha controller
LED Indicators	System Ok (Green) Breaker/Fuse Trip (Red)	System Ok (Green) Breaker/Fuse Trip (Red)
Certifications		
Safety	CSA C22.2 No. 60950 UL 60950-1	CSA C22.2 No. 60950 UL 60950-1


Alpha Technologies Ltd.

For more information visit www.alpha.ca

Canada: Burnaby, British Columbia T: 604.436.5900 F: 604.436.1233
 United States: Bellingham, Washington T: 360.647.2360 F: 360.671.4936

#0470196-00 Rev F (12/2018)

Alpha Technologies reserves the right to make changes to the products and information contained in this document without notice.
 Copyright © 2018 Alpha Technologies. All Rights Reserved. Alpha® is a registered trademark of Alpha Technologies.
 member of The Alpha Group™ is a trademark of Alpha Technologies.

member of The  Group™