

Collect™ 600

48Vdc Small Cell Power Supply
with Inbuilt Battery



Your Power Solutions Partner

- 48V/600W telecom grade outdoor power system, Class 4/IP65
- Integrated battery backup increases system availability and end-user Quality of Experience (QoE)
- Key features enable outdoor small cell deployments
 - Small physical size (16" x 9" x 6") alleviates optical intrusion concerns
 - Light weight (25lb) design maximizes options for deployment on poles and walls
 - Easy to install within minutes by a single technician
- Reduced OpEx resulting from maintenance-free battery & enclosure, and high efficiency rectifier design
- Advanced monitoring and control, including SNMP, at both the system level and for individual circuits



Collect™ 600 overcomes all of the challenges associated with providing DC power with battery backup for small cells. This small, lightweight, connectorized unit was designed for consistent, repeatable installation. Six individual circuits, with integrated over-current protection, and plug-and-play connectors ensure a sufficient number of circuits for site components, all without having to worry about fuses or breakers. Full output power is achieved with either 120Vac or 240Vac input power and with temperatures ranging from -40 to 46°C (plus solar loading). Collect 600 comes with a universal mounting bracket for mounting on poles, walls, or combination brackets. To meet the aesthetic challenges, the product can be offered with a primer finish that can be painted in any color needed to meet municipal or landlord requirements. The economical design and standard features provide industry-leading total cost of ownership for small cell DC power.



Collect 600 48Vdc Small Cell Power Supply with Inbuilt Battery

Part Number: 0100021-001

ELECTRICAL

AC nominal input:.....100 to 277Vac
AC input frequency:.....45 to 65Hz
Output voltage:-48 to -55Vdc
Output power:600W continuous
Efficiency:.....>94.5%
Electrical noise:<30mV RMS (to 10MHz)
 <150mV pk to pk (to 100MHz)
Acoustic noise:<40dBa at 1m (3ft)
Power backup:3.2Ah

MECHANICAL

Dimensions

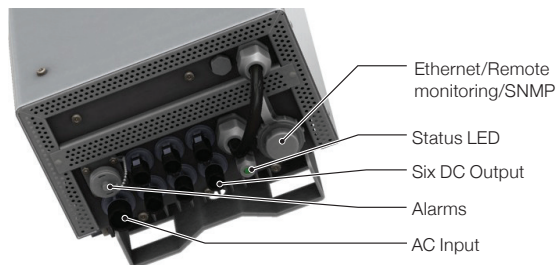
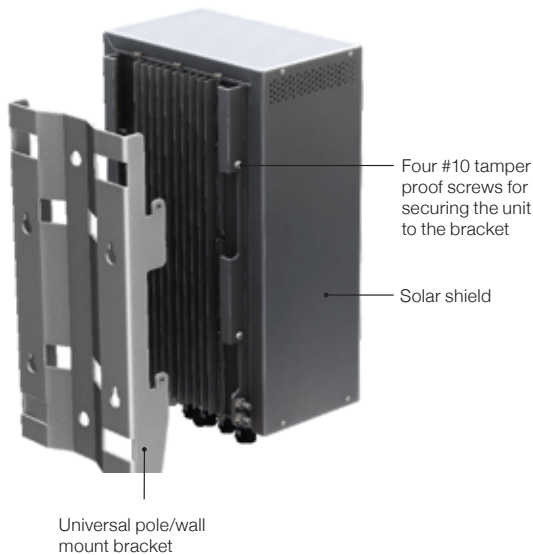
mm:.....382H x 236W x 165D (195 w/bracket)
inches:15H x 9.3W x 6.5D (7.7 w/bracket)

Weight:.....<11kg (24lbs)

Mounting:Bracket for pole and wall mounting

Connections (IP65 cable glands):

- Six (6) DC Output
- Alarms
- AC Input
- Ethernet



ENVIRONMENTAL

Temperature:

Operation: -40 to 46°C (plus solar loading)
Storage: -40 to 85°C (-40 to 185°F)

Environmental

protection:.....IP65
Surge protection:.....6kV/3kA
Humidity:.....5 to 100% RH
Elevation:.....-500 to 2000m (-1640 to 6561ft)

PERFORMANCE/FEATURES

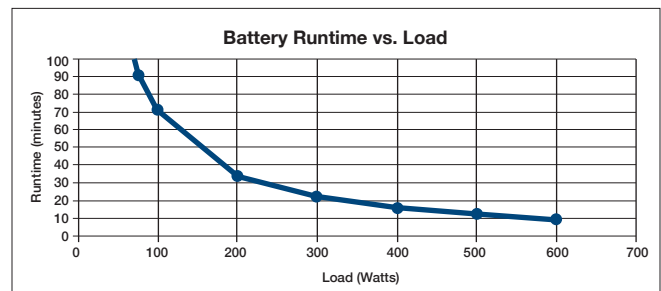
Power backup runtime: 15 min @ 450W load

Alarms:

- AC Fail
- On Battery
- BMS Failure
- DC Error

LED:Green: DC Output OK

Remote monitoring:.....Ethernet, SNMP



AGENCY COMPLIANCE

Safety:	IEC/CSA/UL 60950-1 IEC/CSA/UL 60950-22 CE Mark
EMC:	CFR47 (FCC) Part 15 Class A EN 55022 class A EN 61000-3-2, 3-3 ETSI 300 386-2
Immunity:	EN 61000-4-2, 4-3, 4-4, 4-5, 4-6, -4-11 ANSI / IEEE C62.41 CatB3
NEBS:	GR-63-CORE, GR-1089-CORE, GR-3108-CORE, GR-3168-CORE

Alpha Technologies Ltd.

Canada: Burnaby, British Columbia	T: 604.436.5900	F: 604.436.1233
United States: Bellingham, Washington	T: 360.647.2360	F: 360.671.4936

Alpha Technologies reserves the right to make changes to the products and information contained in this document without notice. Copyright © 2016 Alpha Technologies. All Rights Reserved. Alpha® is a registered trademark of Alpha Technologies. member of The Alpha Group™ is a trademark of Alpha Technologies.

For more information visit www.alpha.ca

#0470208-00 Rev B (04/2016)

member of The Group™