



Cordex HP LPS04

Installation & Operation Manual

Part # 0120037-J0
Effective: 08/2015




Cordex HP LPS04


-48Vdc to +/-190Vdc Quad Line Power Up Converter Unit

 **NOTE:**

Photographs contained in this manual are for illustrative purposes only. These photographs may not match your installation.

 **NOTE:**

Operator is cautioned to review the drawings and illustrations contained in this manual before proceeding. If there are questions regarding the safe operation of this powering system, contact Alpha Technologies or your nearest Alpha representative.

 **NOTE:**

Alpha shall not be held liable for any damage or injury involving its enclosures, power supplies, generators, batteries, or other hardware if used or operated in any manner or subject to any condition inconsistent with its intended purpose, or if installed or operated in an unapproved manner, or improperly maintained.

For technical support, contact Alpha Technologies:

Canada and USA: **1-888-462-7487**

International: **+1-604-436-5547**

Copyright

Copyright © 2014 Alpha Technologies Ltd. All rights reserved. Alpha is a registered trademark of Alpha Technologies.

No part of this documentation shall be reproduced, stored in a retrieval system, translated, transcribed, or transmitted in any form or by any means manual, electric, electronic, electromechanical, chemical, optical, or otherwise without prior explicit written permission from Alpha Technologies.

This document, the software it describes, and the information and know-how they contain constitute the proprietary, confidential and valuable trade secret information of Alpha Technologies, and may not be used for any unauthorized purpose, or disclosed to others without the prior written permission of Alpha Technologies.

The material contained in this document is for information only and is subject to change without notice. While reasonable efforts have been made in the preparation of this document to assure its accuracy, Alpha Technologies assumes no liability resulting from errors or omissions in this document, or from the use of the information contained herein. Alpha Technologies reserves the right to make changes in the product design without reservation and without notification to its users.

Table of Contents

1. Safety.....	4
1.1 Safety Symbols	4
1.2 General Warning and Cautions.....	4
1.3 Mechanical Safety.....	4
1.4 Electrical Safety	5
2. Product Overview.....	6
2.1 Product part number	6
3. Product Specifications	7
4. Features.....	8
4.1 Converter Modules.....	8
4.2 LPS04 Connections and Indicators.....	9
4.3 Connecting the DC Input.....	9
5. Site Evaluation and Pre-Installation	10
5.1 Pre-Installation Requirements.....	10
5.2 Packing Materials.....	10
5.3 Check for Damage	11
5.4 General Receipt of Shipment.....	11
6. LPS04 Installation	12
6.1 General Instructions	12
6.2 Safety Precautions.....	12
6.3 Tools Required	12
6.4 Mounting	12
6.5 Input and Output Wiring.....	14
6.6 Input Cables.....	14
6.7 Output Cables	14
6.8 Troubleshooting Converter Status LEDs.....	15

7. Warranty and Service Information	16
7.1 Technical Support	16
7.2 Warranty Statement	16
7.3 Limited Hardware Warranty	16
7.4 Battery Warranty	16
7.5 Warranty Claims.....	16
7.6 Service Centers	16
8. Acronyms and Definitions	17
9. Certification	18

List of Figures

Figure 1 — LPS04	6
Figure 2 — Cable Gauge	9
Figure 3 — Ground Connection	9
Figure 4 — Panel or wall mount option A.....	12
Figure 5 — Panel or wall mount option B	12

1. Safety

SAVE THESE INSTRUCTIONS: This manual contains important safety instructions that must be followed during the installation, servicing, and maintenance of the product. Keep it in a safe place. Review the drawings and illustrations contained in this manual before proceeding. If there are any questions regarding the safe installation or operation of this product, contact Alpha Technologies or the nearest Alpha representative.

1.1 Safety Symbols

To reduce the risk of injury or death, and to ensure the continued safe operation of this product, the following symbols have been placed throughout this manual. Where these symbols appear, use extra care and attention.



NOTE:

A NOTE provides additional information to help complete a specific task or procedure. Notes are designated with a check mark, the word NOTE, and a rule beneath which the information appears



CAUTION!

CAUTION indicates safety information intended to PREVENT DAMAGE to material or equipment. Cautions are designated with a yellow warning triangle, the word CAUTION, and a rule beneath which the information appears.



WARNING!

WARNING presents safety information to PREVENT INJURY OR DEATH to personnel. Warnings are indicated by a shock hazard icon, the word WARNING, and a rule beneath which the information appears.



HOT!

The use of HOT presents safety information to PREVENT BURNS to the technician or user.

1.2 General Warning and Cautions



WARNING!

This system is designed to be installed in a restricted access location that is inaccessible to the general public.

1.3 Mechanical Safety



CAUTION!

Do not disassemble the product – call our qualified service centers for servicing. Incorrect reassembling may result in a risk of electrical shock or fire.

Do not operate the product if it has received a sharp blow, it has been dropped, or otherwise damaged in any way – return it to a qualified service center for repair.

1.4 Electrical Safety

WARNING!

The DC input to the modules (and the converter system) – though not dangerous in voltage – has a high short circuit current capacity that may cause severe burns and electrical arcing.

The DC output is a potentially dangerous voltage. Do not touch the output connections when under power. Ensure that power has been removed from the outputs before working on them.

Before working with any live battery or power system, follow these precautions:

- a. Remove all metallic jewelry, such as watches, rings, metal rimmed glasses, or necklaces.
- b. Wear safety glasses with side shields at all times during the installation.
- c. Use OSHA approved insulated hand tools. Do not rest tools on top of batteries.

WARNING!

Lethal voltages are present within the power system. Always assume that an electrical connection or conductor is energized. Check the circuit with a voltmeter with respect to the grounded portion of the enclosure (both AC and DC) before performing any installation or removal procedure.

- Do not work alone under hazardous conditions.
- A licensed electrician is required to install permanently wired equipment. Hazardous voltages are present at the input of power systems. Ensure that the utility power is disconnected and locked out before performing any installation or removal procedure.
- Ensure that no liquids or wet clothes come into contact with internal components.
- Hazardous electrically live parts inside this unit are energized from the batteries even when the AC input power is disconnected.
- The enclosure which contains the DC or AC power system along with customer installed radios must remain locked at all times, except when authorized service personnel are present.
- Always assume electrical connections or conductors are live. Turn off all circuit breakers and double-check with a voltmeter before performing installation or maintenance.
- Place a warning label on the utility panel to warn emergency personnel that a reserve battery source is present which will power the loads in a power outage condition or if the AC disconnect breaker is turned off.
- At high ambient temperature conditions, the internal temperature can be hot so use caution when touching the equipment.

2. Product Overview

The LPS04 is a compact, stand-alone DC to DC up-converter system designed for distributed power communications applications using +/- 190Vdc (RFT-V circuit) over twisted copper pairs. Using switched mode technology, the LPS04 quad output converter module provides outstanding efficiency in a compact design.

Applications include, powering mini DSLAMs, optical network terminals in fiber to the home networks, as well as with municipal Wi-Fi access points. The LPS04 may be installed inside or outside a remote OSP power cabinet. Line powering enables using the existing remote power node backup without the need at the remote site of AC utility or battery backup, thus reducing the installation and operating expenses and providing flexibility related to site selections for the installation of the remote communicating equipment.

Alpha's LPS04 modular DC to DC converter unit incorporates a full range of standard features including, current limiting and individual ground fault interrupt for each circuit. Particular emphasis is placed on recognizing a fault condition and shutting down the circuit as quickly as possible to ensure the highest level of safety. Compliance with GR-1089-CORE Class A2 enables crafts people to work on the equipment while powered which significantly reduced the administrative and labeling requirements and overheads for the high voltage wiring.

- Four +/- 190Vdc line powering RFT-V channels with current limiting and ground fault protection
- 91% efficiency for increased OPEX savings and reduced carbon footprint
- Rugged and sealed enclosure for installation either inside or outside power cabinets
- Wide operating temperature range for deployment in harsh OSP environment
- High reliability sealed design



Figure 1 — LPS04

2.1 Product part number

Part number 0120037-001.

3. Product Specifications

Electrical	
Input voltage:	-40 to -60Vdc
Output voltage:	±190Vdc (RFT-V)
Power:	96W nominal per output, >92W for worst case conditions (4 outputs per module)
Efficiency:	>91%
Regulation:	<2% no load to full load <1% line
Output Noise:	
Wide band:	<500mVRMS (10kHz to 10MHz) <2.5V p-p (10kHz to 100MHz)
Connections:	Two blunt cut cables
Recommended Breaker:	15A dc
Enclosure:	NEMA 3R
Mechanical	
Dimensions (HxWxD):	142mm x 305mm x 54mm (5.6in x 12in x 2.1in)
Weight:	2.9kg (6.5lbs)
Environmental	
Temperature Operating:	- 40 to 65°C (-40 to 149°F)
Temperature storage:	- 40 to 85°C (-40 to 185°F)
Humidity	0 to 100% RH non-condensing
Altitude:	-500 to 2800m (1640 to 9186ft)
Performance/ Features	
Alarm relays:	1x Form C
Alarm indicating LEDs (1 per channel):	Channel OK (green) Recoverable (yellow) Irrecoverable Fault (red)
Agency Compliance	
Safety:	CSA 60950-1-07 (ed.2)/UL 60950-1 (ed.2) CSA 60950-21-03 (ed.1)/UL 60950-21 (ed.1) CSA 94.2-07 (ed.1)/UL 50E (ed.1) GR-1089-CORE Class A2 CSA 60950-22-07 (ed.1)/UL 60950-22 (ed.1)
EMC:	ETSI EN 300 386 V 1.6.1 EN 55022-2010, Class A FCC CFR 47, Part 15, Subpart B, Class A
MTBF:	> 400,000 @30°C (86°F) ambient; test model Telcordia SR-332, Issue 2 (2006)

4. Features

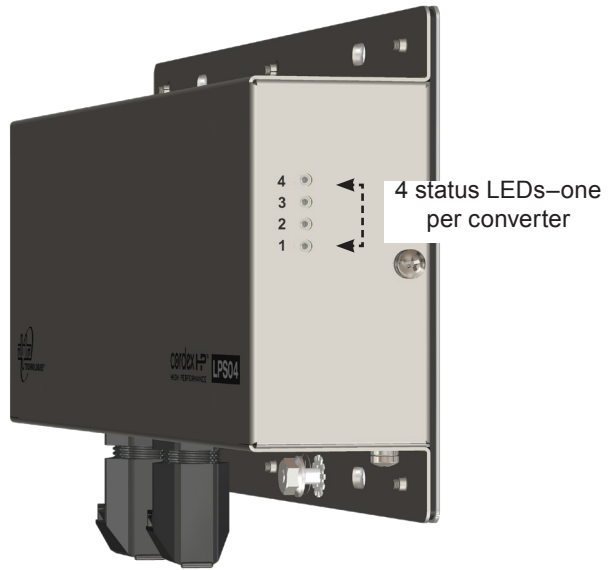
4.1 Converter Modules

An LPS04 unit contains four isolated DC to DC line powering converters (channels) with a common control and supervisory circuit. Each converter output operates independently. An internal micro controller monitors both the inputs and outputs of the converters, turns the converters on and off, and generates converter fail alarm if required.

4.1.1 Status Indicators

The LPS04 unit has four LED indicators – one per converter. The LEDs are color-coded to indicate converter channel status as follows:

LED State	Converter status
Green	Normal operation (Vout > 90%)
Yellow	Recoverable: <ul style="list-style-type: none">• Over temperature
Blinking yellow	Recoverable: <ul style="list-style-type: none">• OCP/Overload• Input quality not OK
Red	Locked-State: <ul style="list-style-type: none">• OVP• Fuse Fail
Blinking red	Recoverable: <ul style="list-style-type: none">• GFI
OFF	No power <ul style="list-style-type: none">• Input fuse cut-off



4.1.2 Module Alarm Relay

An alarm is activated after any of the following conditions on any channel

- Internal regulation fails
- Output voltage $\pm 140V$
- Over Voltage Protection (OVP) operation
- Ground Fault Interrupt (GFI) trip
- Input fuse or output fuse fail
- Output short circuit ($\pm 30V \pm 20\%$)
- Input voltage out of range
- Heat sink/ambient temperature out of range (Over Temperature Protection)

4.2 LPS04 Connections and Indicators

For detailed information on the connections, refer to section 6.5 of this manual.

Input connection: 18 AWG 3-conductor wire cable

Output connection: 24 AWG 12-conductor wire cable

Ground connection: #10-32 ground stud

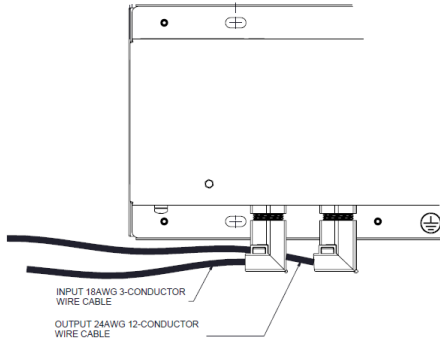


Figure 2 — Cable Gauge

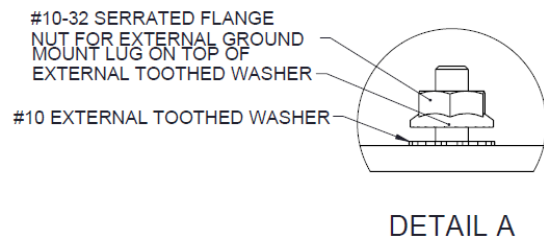


Figure 3 — Ground Connection

4.3 Connecting the DC Input



WARNING!

Warning: The LPS04 unit shall be permanently connected to the DC mains supply with the supplied power cable. A DC breaker shall be used as a disconnect device, and shall be rated at 15A DC.

Grounding: The LPS04 unit shall be reliably grounded via a #6 AWG copper inductor at the grounding terminal provided on the LPS04 unit.

5. Site Evaluation and Pre-Installation

5.1 Pre-Installation Requirements

5.1.1 Effective Capacitance

The effective capacitance of each output of the LPS04 is 2.7 microfarads maximum between the output connections to the telecommunications network and 0.5 microfarads between each output connection to the telecommunications network and earth ground.

- At the time of installation, carry out a system assessment to ensure that the effective capacitance of the total system, including the capacitance of the LPS04 system, does not exceed 11 μF (Line to Earth) and 40 μF (Line to Line).

5.1.2 RFT-V Circuits

- At the time of installation, ensure that the voltage rating of the wiring of the telecommunication network is adequate for the normal RFT circuit voltage (+/-200Vdc), together with superimposed transients.
- Ensure that the circuits to be connected together are all RFT-V circuits.

5.1.3 Primary Protection

The LPS04 has built-in second level surge protection in compliance with the GR-1089 requirement. Primary protection must be in place at the customer site.

The LPS04 includes secondary surge protection. External primary surge protection devices are necessary to optimally protect the RFT-V circuits from lightning surge and maintain safety certification to UL/CSA 60950-21.

Each channel (pair) must be properly protected by the upstream system using a 5-pin protector to a level corresponding to a Bourns 2410 Series. For example: 2410-33-G-MSP-S provides the part in a red color. This protector should be UL 497 listed and rated for 300-400 Volts voltage breakdown range.

5.1.4 Installation Locations



WARNING!

Do not submerge the LPS04 under water.

Allowable installation locations for the LPS04 include the following: outdoors, direct sunlight, and inside or outside a cabinet.

5.2 Packing Materials

Alpha is committed to providing products and services that meet our customers' needs and expectations in a sustainable manner, while complying with all relevant regulatory requirements. As such Alpha strives to follow our quality and environmental objectives from product supply and development through to the packaging for our products.

Packaging assemblies and methods are tested to International Safe Transit Association standards.

Rectifiers and batteries are shipped on individual pallets and are packaged according to the manufacturer's guidelines.

Almost all of Alpha's packaging material is from sustainable resources and or is recyclable.

5.2.1 Returns for Service

Save the original shipping container. If the product needs to be returned for service, it should be packaged in its original shipping container. If the original container is unavailable, make sure that the product is packed with at least three inches of shock-absorbing material to prevent shipping damage.

Alpha Technologies is not responsible for damage caused by improper packaging of returned products.

5.3 Check for Damage

Before unpacking the product, note any damage to the shipping container. Unpack the product and inspect the exterior for damage. If any damage is observed, contact the carrier immediately.

Continue the inspection for any internal damage. In the unlikely event of internal damage, inform the carrier and contact Alpha Technologies for advice on the impact of any damage.

5.4 General Receipt of Shipment

The inventory included with your shipment depends on the options you have ordered. The options are clearly marked on the shipping container labels and bill of materials.

Call Alpha Technologies if you have any questions before you proceed: 1 888 462-7487

6. LPS04 Installation

This chapter is provided for qualified personnel to install an LPS04 system.

6.1 General Instructions

This chapter provides cabling details and notes on cable sizing for DC applications.

Connections to the converter system must comply with all the local codes and ordinances.

6.2 Safety Precautions



The DC input to the modules (and the converter system) – though not dangerous in voltage – has a high short circuit current capacity that may cause severe burns and electrical arcing.

The DC output is a potentially dangerous voltage. Do not touch the output connections when under power. Per GR1089-ClassA2, qualified technicians can work on the unit when energized.

The LPS04 unit shall be continuously energized to prevent condensation within the enclosure.

Before working with any live power system, take the following precautions:

- Remove all metallic jewelry; e.g., watches, rings, metal rimmed glasses, necklaces.
- Wear safety glasses with side shields (and prescription lenses if necessary) at all times during installation.

Use insulated metallic tools.

The installer should follow all applicable local rules and regulations for electrical and battery installations; e.g., CSA, UL, CEC, NEC, OSHA, and local fire codes.

6.3 Tools Required

Various insulated tools are essential for product installation. The following list is a guide:

- Phillips head screwdriver, #2 (tip size 3/16")
- Slot head screwdriver (blade size 1/8")
- Digital voltmeter equipped with test leads
- Cutters, crimpers, and wire strippers 0.25 to 10mm² (#24 to #6 AWG)

6.4 Mounting

The following figures show the two recommended mounting orientations. For more detailed information refer to 0120037-08 drawing at the back of this manual.

Recommended hardware:

- 4x #12 to 1/4" screws or bolts
- 4x #12 to 1/4" flat narrow washers with 0.75" OD max.
- 4x #12 to 1/4" sealing washers for watertight mount

The LPS04 can be mounted to surfaces with #12 (MG) to 1/4-20 fastening hardware in four locations. Alpha recommends using flat washers for improved fastening.

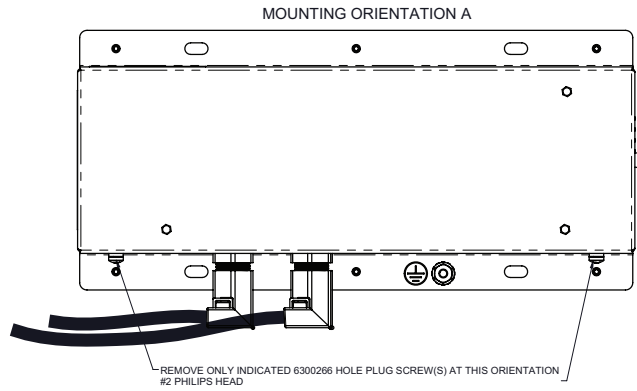
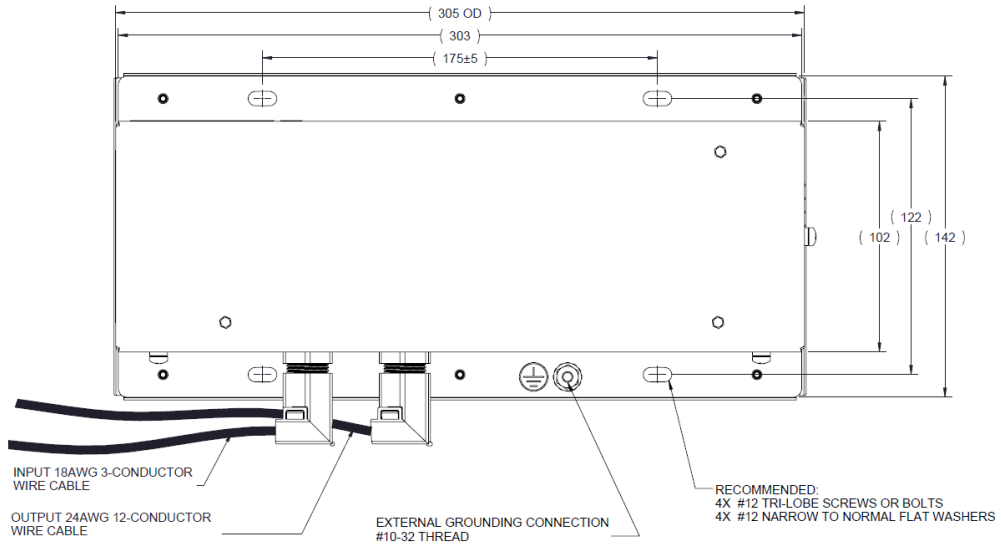


Figure 4 — Panel or wall mount option A

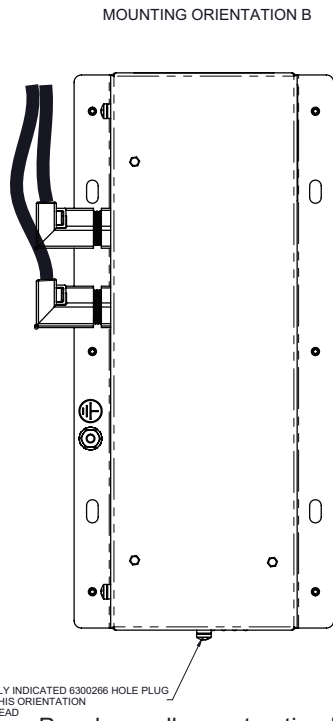
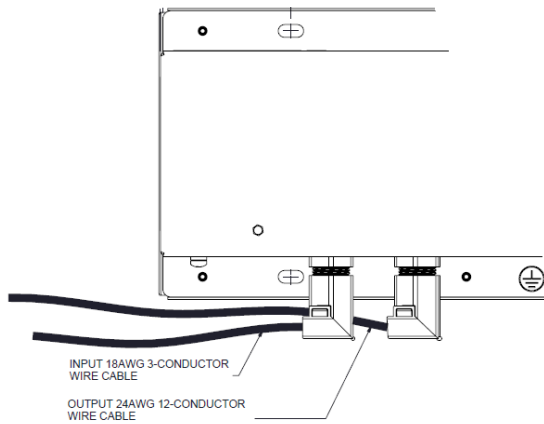


Figure 5 — Panel or wall mount option B

6.5 Input and Output Wiring



6.6 Input Cables

Input Cable (#12 AWG, 3-Conductor, 6ft)

Wire Color	Circuit Designation
White	-48V
Black	48V_RTN
Green	Chassis Ground

6.7 Output Cables

Output Cable (#24 AWG, 12-Conductor, 6ft)

Output	Wire Color	Circuit Designation
Output 1	White/Blue	+190V_OUT1
	Blue	-190V_OUT1
Output 2	White/Orange	+190V_OUT2
	Orange	-190V_OUT2
Output 3	White/Green	+190V_OUT3
	Green	-190V_OUT3
Output 4	White/Brown	+190V_OUT4
	Brown	-190V_OUT4
Alarm	Blue/Red	Relay_NC
	Red	Relay_COM
	Gray	Relay_NO
	White/Gray	--

6.8 Troubleshooting Converter Status LEDs

6.8.1 Card Alarms (All 4 LEDs)

LED State	Individual Converter status	Action
Green	Normal operation (Vout > 90%)	None
Yellow	Recoverable: <ul style="list-style-type: none"> Ambient temperature high 	Resets automatically when ambient temperature reduces to approximately 85°C or below.
Blinking yellow	<ul style="list-style-type: none"> Input qualify not OK 	Output is disabled if input voltage is not within the range of 40-60Vdc.
OFF	Recoverable <ul style="list-style-type: none"> No power 	Check input wiring
	Non-recoverable: <ul style="list-style-type: none"> Main input fuse cut-off 	Potential component failure. Replace with new module.

6.8.2 Individual Channel Alarms

LED State	Individual Converter Status	Action
Green	Normal	None
Blinking Yellow	Recoverable: <ul style="list-style-type: none"> OCP/Overload 	Ensure the load is within the rated current.
	Recoverable: <ul style="list-style-type: none"> Vout low 	Check that output is within the regular range.
	Non-recoverable: <ul style="list-style-type: none"> Converter Input Fuse fail 	Potential component failure. Replace with new module.
Red	Recoverable: <ul style="list-style-type: none"> OVP 	OVP will cause the output to restart every 2 seconds, until the fault is removed. If the fault persists for 60 seconds, the output will shut down for 60 seconds and then attempt to restart every 60 seconds until the fault is cleared.
	Non-recoverable: <ul style="list-style-type: none"> Converter Output Fuse fail 	Failed fuses are not field replaceable. Replace with new module.
Blinking Red	Recoverable: <ul style="list-style-type: none"> GFI 	The converter attempts to restart every 2 seconds until the fault is removed. If the fault persists for 60 seconds, the output will shut down for 30 seconds and attempt to restart every 30 seconds until the fault is cleared.

7. Warranty and Service Information

7.1 Technical Support

In Canada and the USA, call toll free 1-888-462-7487

Customers outside Canada and the USA, call +1-604-436-5547.

7.2 Warranty Statement

For full information details review Alpha's online Warranty Statement at <http://www.alpha.ca/warranty>."

7.3 Limited Hardware Warranty

Alpha warrants that for a period of two (2) years from the date of shipment its products shall be free from defects under normal authorized use consistent with the product specifications and Alpha's instructions, unless otherwise specified in the product manual, in which case, the terms of the manual will take precedence

The warranty provides for repairing, replacing or issuing credit (at Alpha's discretion) for any equipment manufactured by it and returned by the customer to the factory or other authorized location during the warranty period.

There are limitations to this warranty coverage. The warranty does not provide to the customer or other parties any remedies other than the above. It does not provide coverage for any loss of profits, loss of use, costs for removal or installation of defective equipment, damages or consequential damages based upon equipment failure during or after the warranty period. No other obligations are expressed or implied. Warranty also does not cover damage or equipment failure due to cause(s) external to the unit including, but not limited to, environmental conditions, water damage, power surges or any other external influence.

The customer is responsible for all shipping and handling charges. Where products are covered under warranty Alpha will pay the cost of shipping the repaired or replacement unit back to the customer.

7.4 Battery Warranty

Note that battery warranty terms and conditions vary by battery and by intended use. Contact your Alpha sales representative or the Technical Support team at the above number to understand your entitlements under Battery Warranty.

7.5 Warranty Claims

Any claim under this Limited Warranty must be made in writing to Alpha BEFORE sending material back. Alpha will provide Product return instructions upon approval of return request. A Service Repair Order (SRO) and / or Return Authorization (RA) number will be issued ensuring that your service needs are handled promptly and efficiently. Claims must be made online at: <http://www.alpha.ca/web2/service-and-support>.

7.6 Service Centers

For a list of international service centers, refer to the Alpha website:

<http://www.alpha.ca/web2/services-and-support>.

8. Acronyms and Definitions

AC	Alternating current
ANSI	American National Standards Institute
AWG	American Wire Gauge
BTU	British thermal unit
CAN	Controller area network
CEC	Canadian Electrical Code
CSA	Canadian Standards Association
CX	Cordex™ series; e.g., CXC for Cordex System Controller
DC	Direct current
EMC	Electromagnetic compatibility
EMI	Electromagnetic interference
ERM	Electromagnetic Compatibility and Radio Spectrum Matters
ESD	Electrostatic Discharge
FCC	Federal Communications Commission (for the USA)
GFI	Ground fault interrupt
IP	Internet Protocol
LED	Light emitting diode
LVD	Low voltage disconnect
MIL	One thousandth of an inch; used in expressing wire cross sectional area
MOV	Metal oxide varistor
MTBF	Mean time between failures
NC	Normally closed
NEC	National Electrical Code (for the USA)
NO	Normally open
OSP	Outside plant
OVP	Over voltage protection
RFT circuit	Remote feeding telecommunication circuit: A secondary circuit within the equipment, intended to supply or receive DC power via a telecommunication network at voltages exceeding the limits for TNV circuits, and on which overvoltages from telecommunication networks are possible.
RFT-V circuit	An RFT circuit, which is so designed and protected that under normal operating conditions and single fault conditions, the voltages are limited and the accessible area of contact is limited.
RU	Rack unit (1.75")
SELV	Safety Extra Low Voltage
TCP/IP	Transmission Control Protocol / Internet Protocol
THD	Total harmonic distortion
UL	Underwriters Laboratories

9. Certification

About CSA and NRTL

CSA (Canadian Standards Association also known as CSA International) was established in 1919 as an independent testing laboratory in Canada. CSA received its recognition as an NRTL (Nationally Recognized Testing Laboratory) in 1992 from OSHA (Occupational Safety and Health Administration) in the United States of America (Docket No. NRTL-2-92). This was expanded and renewed in 1997, 1999, and 2001. The specific notifications were posted on OSHA's official website as follows:

- Federal Register #: 59:40602 - 40609 [08/09/1994]
- Federal Register #: 64:60240 - 60241 [11/04/1999]
- Federal Register #: 66:35271 - 35278 [07/03/2001]

When these marks appear with the indicator "C and US" or "NRTL/C" it means that the product is certified for both the US and Canadian markets, to the applicable US and Canadian standards. (1)

Alpha rectifier and power system products, bearing the aforementioned CSA marks, are certified to CSA C22.2 No. 60950-01 and UL 60950-01. Alpha UPS products, bearing the aforementioned CSA marks, are certified to CSA C22.2 No. 107.3 and UL 1778.

As part of the reciprocal, US/Canada agreement regarding testing laboratories, the Standards Council of Canada (Canada's national accreditation body) granted Underwriters Laboratories (UL) authority to certify products for sale in Canada. (2)

Only Underwriters Laboratories may grant a licence for the use of this mark, which indicates compliance with both Canadian and US requirements. (3)



NRTLs capabilities

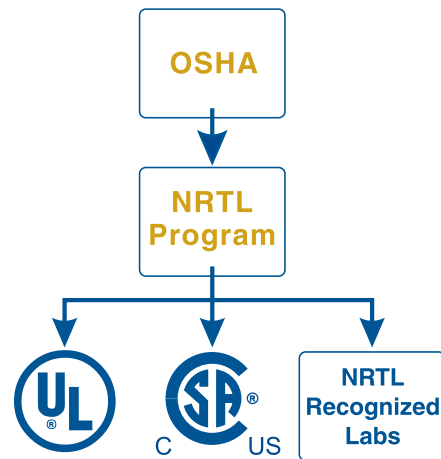
NRTLs are third party organizations recognized by OSHA, US Department of Labor, under the NRTL program.

The testing and certifications are based on product safety standards developed by US based standards developing organizations and are often issued by the American National Standards Institute (ANSI). (4)

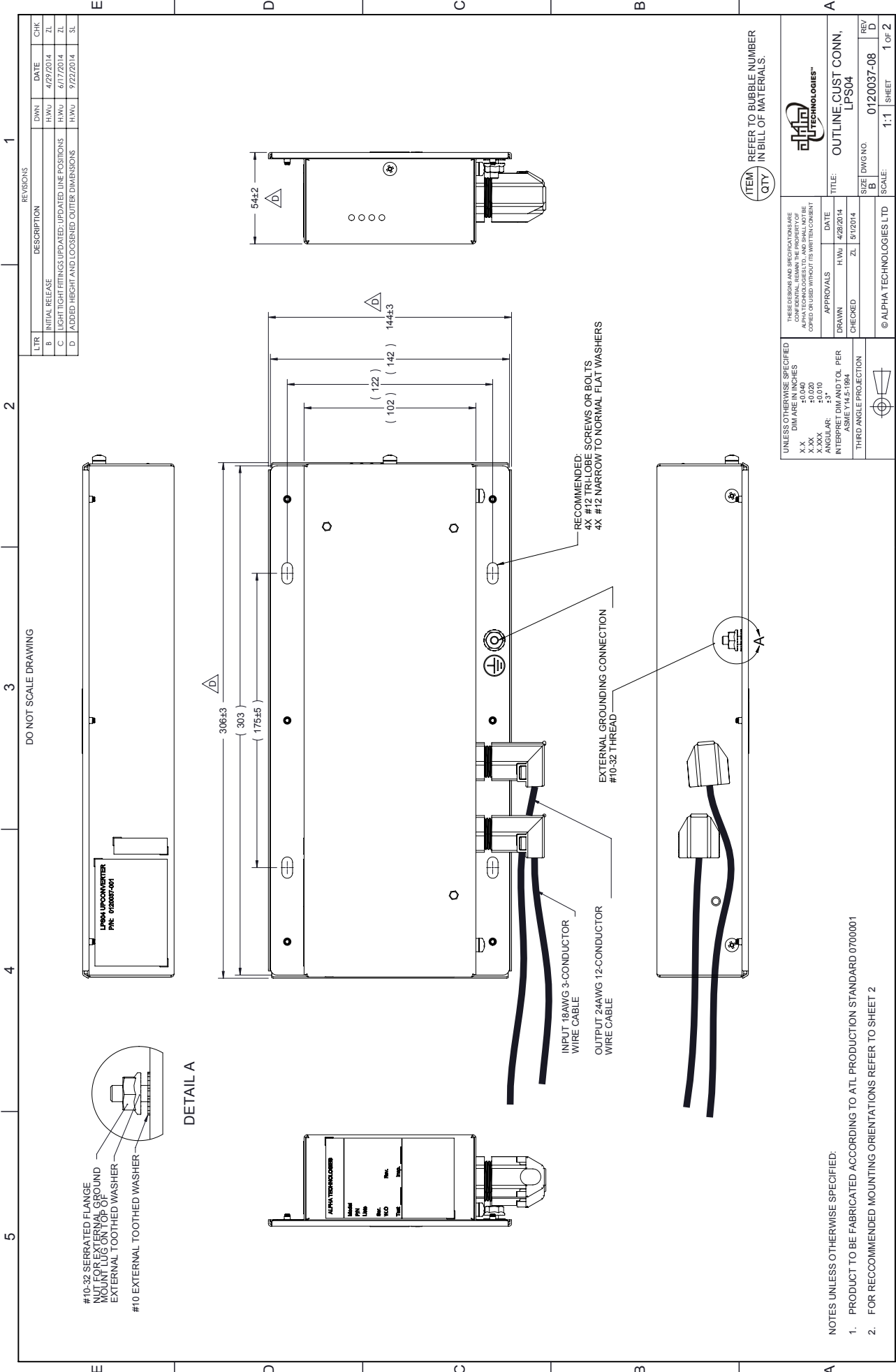
The NRTL determines that a product meets the requirements of an appropriate consensus-based product safety standard either by successfully testing the product itself, or by verifying that a contract laboratory has done so, and the NRTL certifies that the product meets the requirements of the product safety standard. (4)

Governance of NRTL

The NRTL Program is both national and international in scope with foreign labs permitted.



(1) www.csagroup.org
(2) www.scc.ca
(3) www.ulc.ca
(4) www.osha.gov



DO NOT SCALE DRAWING

REVISIONS

LTR	DESCRIPTION	DWN	DATE	CHK
B	INITIAL RELEASE	H.W.U	4/29/2014	ZL
C	LIGHT TIGHT FITTINGS UPDATED; UPDATED LINE POSITIONS	H.W.U	6/17/2014	ZL
D	ADDED HEIGHT AND LOOSEBEN OUTIER DIMENSIONS	H.W.U	9/22/2014	SL

ITEM QTY	REFER TO BUBBLE NUMBER IN BILL OF MATERIALS.
----------	--

UNLESS OTHERWISE SPECIFIED DIM ARE IN INCHES	THESE DESIGNS AND SPECIFICATIONS ARE CONFIDENTIAL. REMAIN THE PROPERTY OF ALPHA TECHNOLOGIES LTD. NOT TO BE COPIED OR USED WITHOUT ITS WRITTEN CONSENT
X.X ±.000	
X.XX ±0.020	
X.XXX ±0.010	
ANGULAR: ±3°	
INTERFERENCE FIT: .0015" TYP PER ASSEMBLY DRAWING	
THIRD ANGLE PROJECTION	

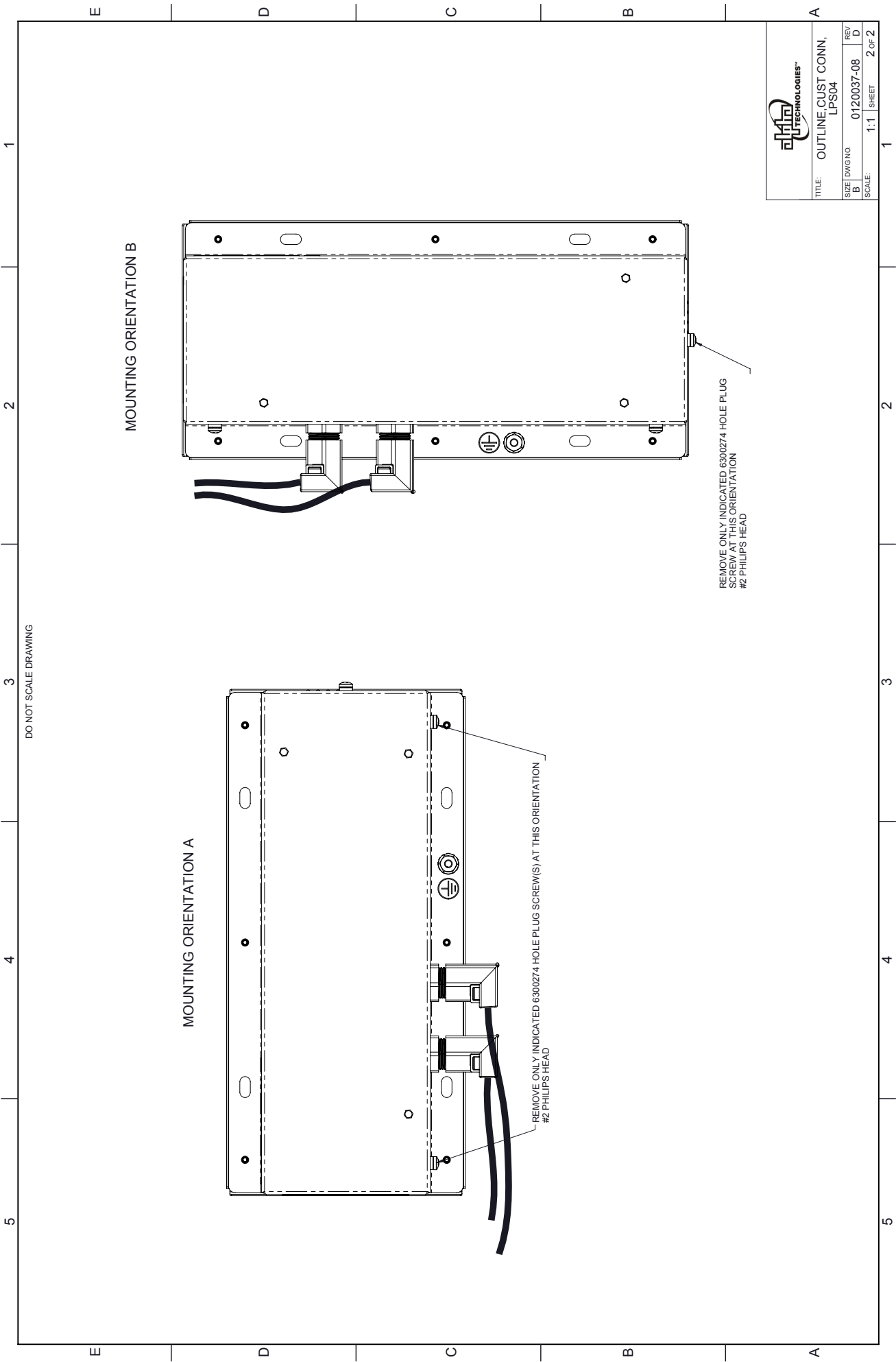
APPROVALS	DATE
DRAWN	H.W.U 4/29/2014
CHECKED	ZL 5/12/2014

TITLE	OUTLINE, CUST. CONN.
SIZE	LPS04

SCALE	1:1
SHEET	1 OF 2

© ALPHA TECHNOLOGIES LTD

NOTES UNLESS OTHERWISE SPECIFIED:
 1. PRODUCT TO BE FABRICATED ACCORDING TO ATL PRODUCTION STANDARD 0700001
 2. FOR RECOMMENDED MOUNTING ORIENTATIONS REFER TO SHEET 2



ALPION TECHNOLOGIES™	
TITLE: OUTLINE, CUST CONN. LPS04	
SIZE DWG NO. 0120037-08	REV D
SCALE: 1:1	SHEET 2 OF 2



Alpha Technologies Ltd.
7700 Riverfront Gate
Burnaby, BC V5J 5M4
Canada
Tel: +1 604 436 5900
Fax: +1 604 436 1233
Toll Free: +1 800 667 8743
www.alpha.ca

Alpha Technologies Inc.
3767 Alpha Way
Bellingham, WA 98226
United States
Tel: +1 360 647 2360
Fax: +1 360 671 4936
www.alpha.com

Alpha Industrial Power Inc.
1075 Satellite Blvd NW.
Suite 400
Suwanee, GA 30024
Tel: +1 678 475 3995
Fax: +1 678 584 9259
www.alpha.com

Alpha Energy
17825 59th Ave. NE, Suite B
Arlington, WA 98223
United States
Tel: +1 360 435 6030
Fax: +1 360 435 6019
www.alpha.com

Alpha Technologies GmbH.
Hansastraße 8
D-91126
Schwabach, Germany
Tel: +49 9122 79889 0
Fax: +49 9122 79889 21
www.alphatechnologies.com

Alpha Technologies Europe Ltd.
Twyford House, Thorley
Bishop's Stortford
Hertfordshire, CM22 7PA
United Kingdom
Tel: +44 1279 501110
Fax: +44 1279 659870
www.alphatechnologies.com

Alphatec Ltd.
339 St. Andrews St.
Suite 101 Andrea Chambers
P.O. Box 56468
3307 Limassol, Cyprus
Tel: +357 25 375 675
Fax: +357 25 359 595
www.alpha.com

Alpha Technologies Pty Ltd.
Suite 2 32-34 Peter Brock Drive
Eastern Creek NSW 2766
Australia
Tel: +61 2 8599 6960
www.alpha.com

Alpha Innovations Brasil
Address: Rua Alvares Cabral,
N° 338 – Diadema - SP
09981-030
Brazil
Tel: +55 11 2476 0150
www.alphainnovations.com.br

Alpha Technologies S.A.
1, Avenue Alexander Fleming
B-1348 Ottignies, Louvain-la-Neuve
Belgium
Tel: +32 10 438 510
Fax: +32 10 438 213
www.alphatechnologies.eu

OutBack Power
17825 59th Ave. NE, Suite B
Arlington, WA 98223
United States
Tel: +1 360 435 6030
Fax: +1 360 435 6019
www.outbackpower.com

Alpha Tec Trading (Shenzhen) Co. Ltd.
Suite 1903, Tower 1,
China Hong Kong City,
33 Canton Road,
Kowloon, Hong Kong
Tel: +852 2736 8663
Fax: +852 2199 7988
www.alpha.com

NavSemi Technologies Pvt. Ltd.
Bengaluru, India Office
Plot No: 29 (P1) & 31 (P1),
Electronic City Phase 2,
Bengaluru - 560 100, India.
Tel: +91 80 6539 2666
www.navsemi.com

Alpha Mexico Network Power S.A. de C.V.
Calle Dakota #204, of 303, Col. Nápoles.
México D.F. C.P.03810, México
Tel: +55 5543 1114
Toll Free: +01 800 0082 886
www.alphapower.mx

Alpha Technologies Turkey Enerji Ltd Sti
Altaycesme MAH.Sarigul Sok No 33 Umut Kent
Sistesi A Blok D:5
Maltepe, Istanbul
Turkey
Tel: +90 216 370 23 28
Fax: +90 216 370 23 68
www.alpha.com.tr

For technical support, contact Alpha Technologies:
Canada and USA: 1-888-462-7487
International: +1-604-436-5547

Visit us at www.alpha.ca

Power